

# The 3 Rs of Animal Research

Promoting Animal Welfare and Guiding Scientists in the Ethical Conduct of Research

## R EPLACEMENT

Replacing conscious, living vertebrates with cell or tissue cultures, computer models, simulation models, and/or less-developed animal species.

**Examples:** Replacing rodents with zebrafish or fruit flies to study the effects of genetic mutation; learning a surgical technique using a simulator.

## R EDUCTION

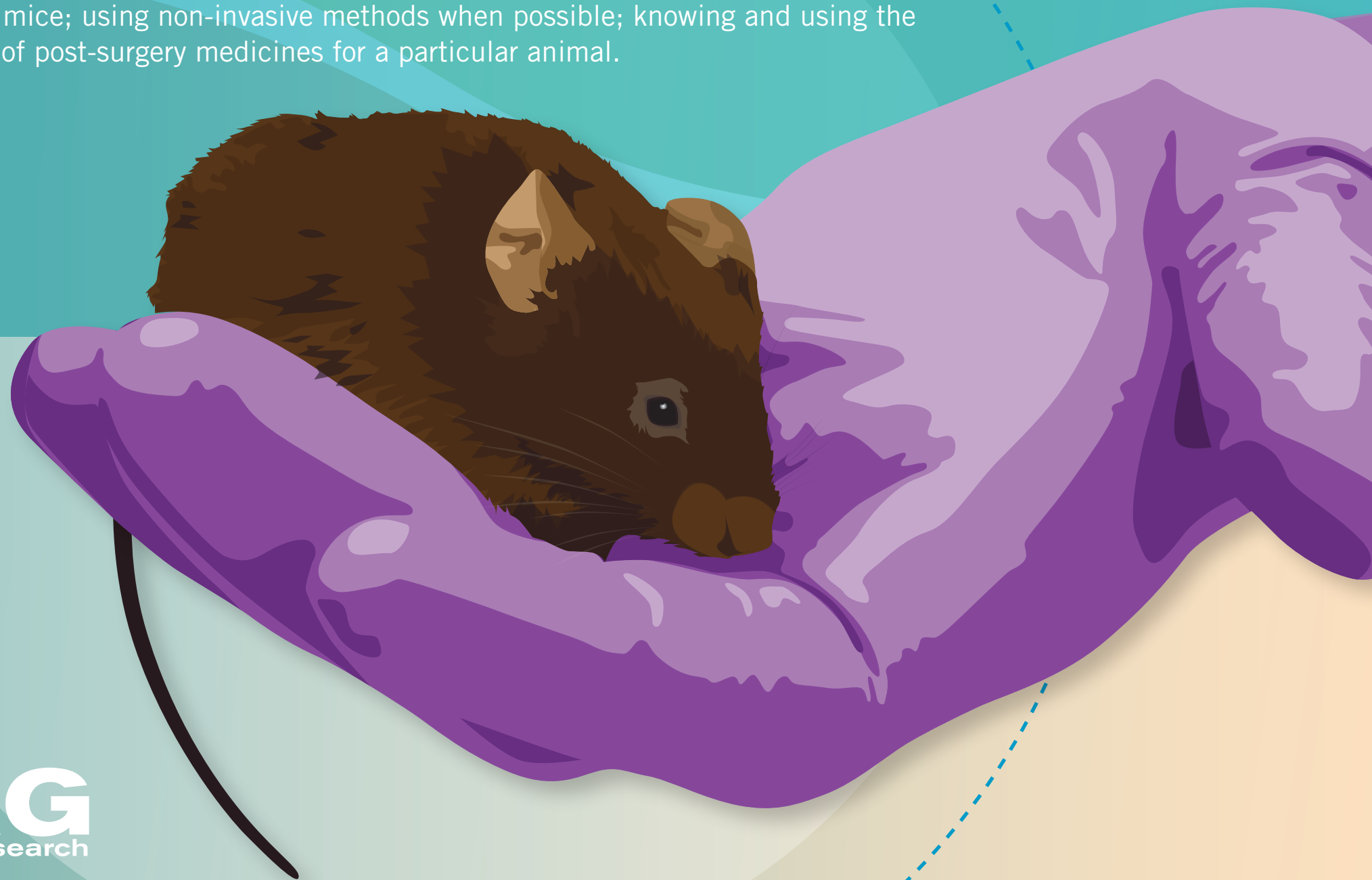
Using the fewest number of animals possible in a research project to gain valid results.

**Examples:** Searching the literature and consulting with colleagues to ensure that experiments are not duplicated; relying on statistics to use neither too many, nor too few, animals in a study.

## R EFINEMENT

Using any technique or procedure that minimizes distress or enriches the life of an animal used in research.

**Examples:** Providing appropriate nesting materials and environmental enrichment for caged mice; using non-invasive methods when possible; knowing and using the best type of post-surgery medicines for a particular animal.



**SEPA** SCIENCE EDUCATION  
PARTNERSHIP AWARD  
Supported by the National Institutes of Health

**NWABR.ORG**  
Northwest Association for Biomedical Research