



NWABR

Northwest Association for Biomedical Research

2016 ANNUAL REPORT

Twenty-seven years ago, the Presidents and CEOs of Pacific Northwest's most respected research facilities recognized that public trust in the integrity of research was essential to the future of medical discovery in our region. NWABR was born out of that commitment and stands today as the Northwest's leading voice for promoting the public's trust in biomedical research and its ethical conduct.

WHY ARE WE HERE?

Our mission is to promote the public's trust in biomedical research and its ethical conduct.

NWABR believes that a strong and vibrant biomedical research community is essential to the health and betterment of individuals and communities. The future of both community and individual health relies on a partnership between researchers, their human subjects, their non-human subjects, physicians and the public at large. NWABR exists to facilitate education and dialogue, to promote ethical practices in research, to provide opportunities for young people to explore biomedical careers and to provide venues where the public can gain insights into the research that will change all of our lives. As an association, *NWABR is a reflection of the values of our members and the life science research community in the Pacific Northwest.*

The core work of NWABR includes convening educational conferences for our members that focus on ethical research with, and care for, laboratory animals and human subjects; creating space for dialogue that advances understanding about life science research, and facilitating educational opportunities for our community and introducing students science education and to career pathways.

EXECUTIVE DIRECTOR'S REPORT

Thank you

An association like NWABR relies on the support, trust and goodwill of an incredibly wide range of stakeholders. I want to thank our member organizations that provide for the core costs of the association. This is our seed capital that allows us the space to plan conferences, respond to changing needs and issues in the biomedical research community and to be there to listen, support and engage when needed.

I also want to thank all of the members of our conference planning committees and partners. The provision of educational conferences for the biomedical research community is a fundamental part of the work of NWABR. In the 2015/16 year we held four annual and highly specialized conferences: IACUC, IRB, IBC and Security and Crisis Communications Conference. We also completed the planning for new Crossing the I's conferences held in Spokane and Portland during the fall. As an organization we are not specialists in any of these areas. However, our planning committees are. They help us to identify important topics, recruit amazing speakers and ensure that these conferences continue to meet the needs of the biomedical research communities.

Additionally I need to thank all of our volunteers. This of course includes the planning committees, conference speakers and Board members. However, it also includes the people who stuff envelopes, intern at camps, help at conferences, make food and prepare materials. Really importantly it also includes our judges and mentors that provide the life of the Middle and High school educational programs.



NWABR
Northwest Association for Biomedical Research

I need to particularly thank NWABR's Board members, who have worked with me as the still fairly new Executive Director and the full NWABR team to provide governance, leadership, support and counsel. They have also worked to make the whole "sausage making process" that we call good governance both fun and productive.

I want to thank the researchers and all of the allied staff in the community who go to work every day with the focus of caring for both animal and human research subjects, while working to develop new treatments that improve all of our lives.

I am lastly humbled to acknowledge our donors and supporters who have been acknowledged in the very long list at the end of this report. These donors and supporters provide us with the resources that enable NWABR's work. I am so totally and absolutely blown away by the fact that you trust us with your time, with your talent and with your treasure.

Lastly, I want to thank the NWABR staff. We are a small team but a lot of stuff gets done because we are so small and we all pitch in to make sure that the most important works gets done – and done well.

2016 IN REVIEW

Year in Review

NWABR has promoted the public's trust in biomedical research and its ethical conduct for 27 years. This past year, NWABR renewed its strategic plan to continue its focus on being nimble and meeting member's needs.

NWABR Programs

Amid all of the changes and improvements during the past financial year, NWABR remained committed to running high quality programs and providing needed member services. Our member services and education programs engage the life science research community including scientists, administrators, physicians, students, teachers, and the general public. Our renewed outlook and vision is based on our commitment to advance the ethical practice of research and the public's trust in this important field.

Member Services

NWABR is first and foremost a membership association. This includes working with our members to advance their understanding of ethical practices by facilitating networking and educational programs where professionals learn from peers and other experts. Promoting the highest possible standards of ethical conduct is at the core of NWABR's work. We place human and animal welfare at the center of medical research.

In 2016, NWABR hosted four professional conferences: Institutional Review Board (IRB), Institutional Biosafety Conference (IBC), Institutional Animal Care and Use Committees (IACUC) and Security and Crisis Communications (SCC). The major focus of each conference centered on bioethics, best practices, emerging trends, and regulatory compliance. Overall, 726 professionals attended these conferences and contributed to the ethics discussion. This is a 50 percent increase on conference attendance in the prior year. This growth in part was due to the ability to partner with PRIM&R for the spring IACUC meeting. It was also partly due to the evolving partnership with Quorum Review IRB and the WIRB-Copernicus group to run the annual IRB conference which is fast becoming a vital national training opportunity.

NWABR has also established a Crossing the I's conference to serve members in Oregon and Eastern WA, ID and Western MT. The smaller regional conferences aim to leverage all of the information developed at the larger institutional conferences and then to share this information with our regional members.

In 2017 NWABR will also be working with the Pacific Northwest Chapter of the Association of Clinical Research Professionals to design a training event focused on the needs of ACRP professionals.



Community and Educational Programs

Additionally, over 1,000 students participated in STEM education programs hosted by NWABR including: Student Bio Expo, the Middle School Contest “Biomedical Breakthroughs and My Life” and our third year of Camp BIOMed! During these programs over 400 professionals from the biomedical research industry volunteered their time to support student learning. These programs improved science literacy in our community, and positively impacted thousands of individuals and their families. I need to especially acknowledge the Shoreline Community College, the Infectious Disease Research Institute, Seattle Pacific University, Zymogenetics, Biddle Consulting and the Knossos Foundation for the support that makes all of these programs possible.

Our public outreach efforts hinge on two priority programs called Speaker’s Bureau and Community Conversations. These programs provide opportunities for researchers and medical professionals to interact with the public and explain their research and views on ethics, while engaging the community in problem solving and dialogue. These programs have led to partnerships in Portland, Spokane and Seattle to host Community Conversations that address ethical issues currently impacting medical research and the broader community.

Restructured Membership Options

This last year has been the first under restructured membership options that allow members to choose from a choice of membership levels and services. This new model is working well for NWABR and we are excited that several new organizations have joined or rejoined NWABR.

Finances

I am incredibly pleased to report that in the swirl of all this additional work and refocusing NWABR was able to produce its first financial surplus during this year. The surplus of \$38,897 is modest but represents about 10 percent of NWABR’s annual budget. Both the Board and I now believe that NWABR has been able to move to a sustainable operating model that addresses the needs of its members. Staffing is a major cost for NWABR and as Executive Director I want to thank all staff who have worked with me to find ways of doing more with less time during 2016.

NOTABLE HIGHLIGHTS

» **CONVENED FOUR MAJOR REGIONAL CONFERENCES** for IACUC, IRB, IBC and SCC drawing 726 participants to learn about best practices, regulatory compliance, and lessons learned.

» **FACILITATED NETWORKING AND COMMUNITY BUILDING** through NWABR’s Speaker’s Bureau and Community Conversations Series. Over 1,500 people were served through these programs.

» **INTRODUCED MORE THAN 600 MIDDLE SCHOOL STUDENTS** to the process of drug and medical device development through NWABR’s annual “Biomedical Breakthroughs and My life” essay contest, where every student received personal feedback from a researcher.

» **EXPANDED NWABR’S CAMP BIOMED SUMMER CAMP WHERE 137 CAMPERS** participated in NWABR’s Cancer, Informatics and CSI summer camp programs. Students built scientific knowledge and understanding of biomedical research and worked on presentation skills.

» **CONTINUED NWABR’S SUCCESSFUL BIOEXPO PROGRAM** that engaged nearly 400 students with a pre-eminent bio medically focused science competition. Students can opt as part of this competition to be mentored by a

working scientist to bring their research and engagement with biomedical research to a higher level.

» **HONORED OREGON HEALTH & SCIENCES UNIVERSITY, PHIL AND PENNY KNIGHT, THE COMMUNITY OF OREGON AND DR. CHARLES (CHUCK) MURRAY** at NWABR’s Speak Up For Research Gala. Speak Up For Research has become one of NWABR’s unifying themes as we work with members to ensure ethically based research continues to be recognized as an essential public priority.

» **COLLABORATED WITH MEMBERS TO PERFORM COMMUNITY OUTREACH** through our Community Conversation Series. Partners included Whitworth College, Seattle Children’s Research Institute, UW Harborview Medical Center, Oregon Health & Science University, and Portland State University.

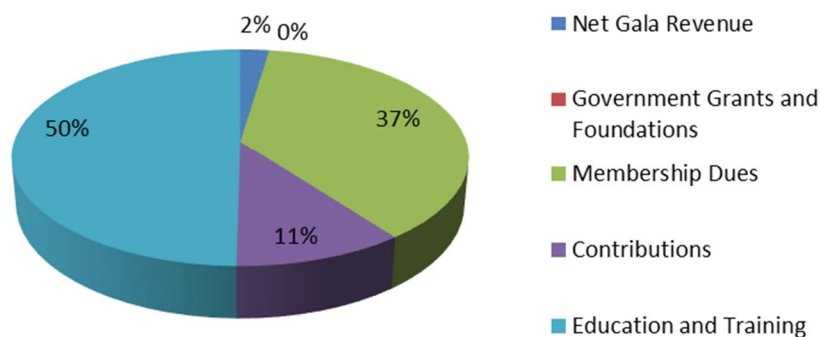
» **ENGAGED 400 PROFESIONALS FROM THE LIFE SCIENCE INDUSTRY** who volunteered their support for NWABR’s Student Bio Expo and Middle School Essay Contest. Volunteers mentored and performed judging activities to support student learning.



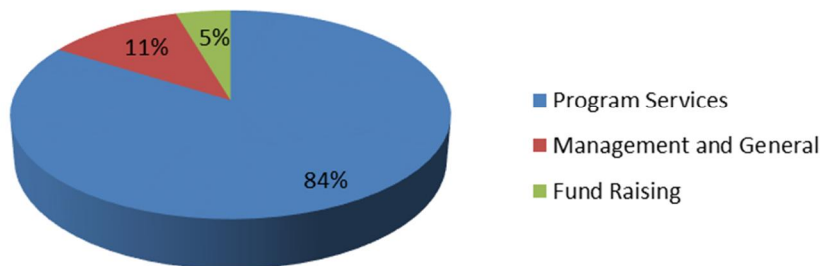
FINANCIALS RESULTS

Northwest Association for Biomedical Research		
Statements of Financial Position		
September 30, 2016 and 2015		
Assets	2016	2015
Current Assets	69,544	25,076
Property and Equipment	144	226
Total Assets	69,688	25,302
Liabilities and Net Assets	2016	2015
Current Liabilities	25,757	20,258
Net Assets	43,941	5,044
Total Liabilities and Net Assets	69,698	25,302

Support and Revenue 2016



Expenses 2016



NWABR
Northwest Association for Biomedical Research

2633 Eastlake Ave E, Suite 302, Seattle, WA 98102

206-957-3337 | executivedirector@nwabr.org | www.nwabr.org

2016 EXECUTIVE COMMITTEE

CAMI GEARHART, JD; President; CEO, Quorum Review, Inc.
CHERYL WEAVER, BA, CCRC, CCRA; Immediate President; Administrative Director, Clinical Research Program, Benaroya Research Institute at Virginia Mason
TODD MYERS; Vice President; Principal, Todd Myers Communication
SALLY THOMPSON-IRITANI; Vice President; Director Office of Animal Welfare, University of Washington
BOB ENNES; Treasurer; Chair, Finance Committee; Director, Health Sciences Academic Services & Facilities, University of Washington
JENNIFER HANSBERRY, RN, BSN; Secretary; Administrative Director, Swedish Research Center
RICHARD BURROWS, Senior Veterinary Sciences Technologist, Zymogenetics
JAMIE KENFIELD, AAA, LVT, LAT; Business Development Manager, SNBL

2016 BOARD OF DIRECTORS

KIM CLARY, BSOCSC; Intellectual Property Manager, IDRI
LINDA COLEMAN, JD; Director, Human Research Protection Program, Yale University
JUAN COTTO, BSOCSC; Manager of Community Outreach, Fred Hutchinson Cancer Research Center
WILLIAM DALE, PHD; Research Integrity Officer, Oregon Health & Science University
WILLIAM S. DERNELL, DVM, MS, DIPL ACVS; Professor and Chair, Department of Veterinary Clinical Sciences, Washington State University
DAVID FORSTER, JD, MA, CIP; Chief Compliance Officer, WIRB-Copernicus Group
KARI KOSZDIN, D.V.M, DIPL ACLAM, CPIA; Veterinary Medical Officer, VA Puget Sound
LORRAINE MCCONNELL; Director of the Office of Research Integrity at Portland State University
ROBERT H. MEALEY, DVM, PhD, DIPL ACVIM; Professor and Dean, Animal Health Research Center, Washington State University
SHANNON REYNOLDS, BA, CPIA, RLAT; Regulatory Compliance Specialist, Allen Institute
CHARLOTTE SHUPERT, PhD, CIP; IRB Specialists
KIM STOCKING, DVM, DACLAM; Attending Veterinarian and Director of the Office of Animal Care, Seattle Children's Research Institute
RAJESH UTHAMANTHIL, DVM, PhD, DACLAM; Attending Veterinarian and Director of Comparative Medicine, Fred Hutchinson Cancer Research Center Animal Health Research Center, Washington State University
PRESTON VAN HOOSER; Review Scientist & Compliance Manager, Office of Animal Welfare, University of Washington
DONALD WANG, MPH; Director of Environmental Health and Safety at the Fred Hutchinson Cancer Research Center
BENJAMIN WILFOND, MD; Director, Treuman Katz Center for Pediatric Bioethics, Seattle Children's Research Institute, Professor, Division of Bioethics and Department of Pediatrics, University of Washington

ORGANIZATIONAL MEMBERS

Platinum Sustaining Members
University of Washington
Quorum Review IRB
Western Institutional Review Board (WIRB)

Gold Sustaining Members
Fred Hutch
Oregon Health & Sciences University
VA Puget Sound
Washington State University
Zymogenetics

Silver Sustaining Members
Todd Myers Communications
Swedish
Benaroya Research Institute
Bloodworks Northwest
SNBL USA

Bronze Sustaining Members
Allen Institute
IDRI
Legacy Health
Multicare Health System
PATH
Portland State University
Whitworth University
Seattle Children's Research Institute
Washington Global Health Alliance
WBBA

Vendor Members
PhRMA
Lucent Medical Systems
Premier Risk Solutions
LabDiet
Linda Montgomery Investigations
Sage Bionetworks
The Jackson Laboratory
The Windward Company

NWABR Staff

VIRGINIA CARHART; Accountant
KEN GORDON; Executive Director
MANSI KAUSHIK; Camp Manager
KIMBERLY MCCLURE; Camp Instructor
WENDI RUSSAC; Board Liaison and Camp Instructor
JANIS WIGNALL; BioExpo Manager
JENNIFER WROBLEWSKI, MPH; Public Engagement Manager

NWABR
Northwest Association for Biomedical Research

2633 Eastlake Ave E, Suite 302, Seattle, WA 98102
executivedirector@nwabr.org | www.nwabr.org

206-957-3337 |

Donors and Supporters

As an organization NWABR is incredibly fortunate to be supported by members, donors, attendees at events and sponsors. Sometimes certain individuals or organizations fall into several of these categories. The following is a combined list of all of NWABR's supporters over the last year. We have grouped multiple contributions – so the donor's true support for NWABR can be seen.

The Fundamental Building Blocks - The ACGT level – contributions up to \$1,000

Adair, Jennifer; Adams, Lizbeth; Algren, Heather; Allen, Joshua; American Physiological Society; Anderson, Joshua; Antony, Christopher; Barwell, Denise; Blount, Patricia; Bogdan, Charu; Borgatta, Lynn; Brabb, Thea; Brandon, Jenn; Branz, Kay; Burner, Tim; Burroughs, Catherine; Cannon, John; Chalupny, Jan; Chandra, Arun; Chungyon, Ivan Michael; Cohen, Trilby; Cole, Jen and Peter; Coleman, Linda; Cotterill, Christie; Cotto, Juan; Crowther, Gregory; Cugini, Crissa; Dale, Bill; Davies, Karin; Delamere, Michael; Dernell, William; Douangpanya, Heather; Eidemiller, Betty; Ennes, Bob; Etches, Duncan; Feagin, Jean; Fraczek, Eudora; Garland, Debra; Gilbert, Steven and Janis; Granger, Tracie; Grevstad, Patra; Haluska, George; Hansberry, Jennifer; Harikrishban, Seetharaman; Iriarte, Desiree; Istvan, Laury; Jacobs, Nicole; Jenkins, Jennifer; Jojic, Ivana; Kaczmariski, Alexa; Kaushik, Mansi; Kenfield, Jamie; Kim, Yun; Kohler, Ted; Koszdin, Kari; Lattemann, Dianne; Lee, Betty; Linda Montgomery Investigations; Linde, Ann-Marie; Lockard, Laura; Lockwood, Sheila; Lorraine Pike (McConnell); Maldonado, Veronica; Mallalieu, Kim; Marshall, Lori; Mayberg, Terry; Mealey, Bob; Michiels, Frank; Mondress, Ellen; Montag, Johanne; Murray, Chuck; Naubert, Carol; Paquin, John; Pasichnyk, Katie;

PATH; Pekow, Cindy; Phelps, Rebecca; PhRMA; Powers, Becky; Purina LabDiet; Reynolds, Shannon; Riddle, James; Rivkin, Melissa; Rogers, Tina; Rosenfeld, Stephen; Rothermel, Caitlin; Russac, Wendi; Sage Bionetworks; Schmidt, Michele; Schoentrup, Lee; Schupert, Charlotte; Slatter, Greg Vandana; Socha, David; Sprugel, Katie and Doug; Sullivan, Jane; Suver, Christine; Swanson, Andrea; The Jackson Laboratory; The Windward Company; Thomas, Mele; Thompson-Iritani, Brian and Sally; Utley, Rod; Van Hooser, Preston; Verma, Sanjeev; Visscher, Valentina; Vondrasek, Claudia; Wang, Donald; Wechkin, Hope; Weeks, Reitha; Wignall, Janis; Wolden Hanson, Tami.

The Variability of Life –The Gene Level – contributors from \$1,000 and up to \$5,000

Allen Institute; Benaroya Research Institute; Biddle, Jane; Burrows, Richard; Fenyk-Melody, Judith; Gearhart, Cami; Gerlich, Katharyn; Gordon, Ken; Infectious Disease Research Institute (IDRI); Legacy Health Systems; Lucent Medical Systems; Multicare Health System; Pekow Family Foundation; Portland State University, Research & Strategic Partnerships; Rose, Lynn and Tim; Seattle Childrens Research Institute; Stocking, Kim; Weaver, Cheryl; Whitworth University; Wroblewski, Jen.

The Pattern of Life – The Chromosome Level – contributors from \$5,000 and up to \$15,000

Alvord, Nancy; Bloodworks Northwest (Puget Sound Blood Center); Fred Hutch Cancer Research Center; Oregon Health & Science University; SNBL USA; Swedish Health Services; Todd Myers Communications; VA Puget Sound Health Care System; Washington State University; ZymoGenetics- A Bristol-Myers Squibb Company.

The Full Expression of Life – The Genome Level – contributors from \$15,000 and up

Quorum Review IRB; WIRB-Copernicus Group; Knossos Foundation; University of Washington;

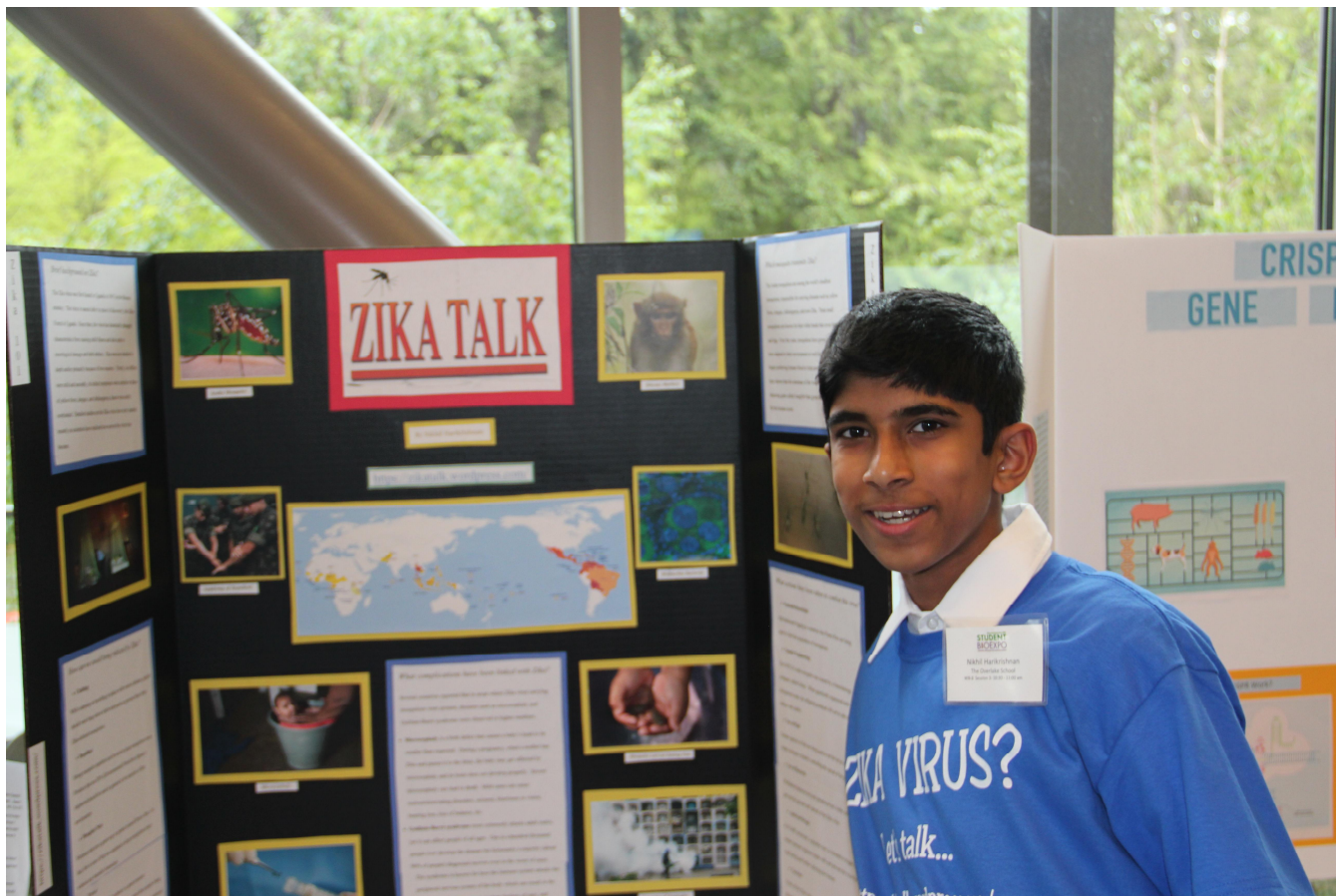
NWABR
Northwest Association for Biomedical Research

2633 Eastlake Ave E, Suite 302, Seattle, WA 98102
executivedirector@nwabr.org | www.nwabr.org

206-957-3337 |

CONCLUSION

The Board and staff of NWABR wants to thank all NWABR members, the former NWABR staff, current and former volunteers and the Biomedical Research community for all of their support over this trying year. We sincerely thank you for all of your support and thank you for your commitment to Biomedical Research.



A winning entry from the 2016 Student Bio Expo

NWABR
Northwest Association for Biomedical Research

2633 Eastlake Ave E, Suite 302, Seattle, WA 98102

206-957-3337 | executivedirector@nwabr.org | www.nwabr.org