



NWABR

Northwest Association for Biomedical Research

2017 ANNUAL REPORT

Twenty-eight years ago, the Presidents and CEOs of Pacific Northwest's most respected research facilities recognized that public trust in the integrity of research was essential to the future of medical discovery in our region. NWABR was born out of that commitment and stands today as the Northwest's leading voice for promoting the public's trust in biomedical research and its ethical conduct.

WHY ARE WE HERE?

Our mission is to promote the public's trust in biomedical research and its ethical conduct.

NWABR believes that a strong and vibrant biomedical research community is essential to the health and betterment of individuals and communities. The future of both community and individual health relies on a partnership between researchers, their human subjects, their non-human subjects, physicians and the public at large. NWABR exists to facilitate education and dialogue, to promote ethical practices in research, to provide opportunities for young people to explore biomedical careers and to provide venues where the public can gain insights into the research that will change all of our lives. As an association, *NWABR is a reflection of the values of our members and the life science research community in the Pacific Northwest.*

The core work of NWABR includes convening educational conferences for our members that focus on ethical research with, and care for, laboratory animals and human subjects; creating space for dialogue that advances understanding about life science research, and facilitating educational opportunities for our community and introducing students to science education and to career pathways.

EXECUTIVE DIRECTOR'S REPORT

Thank you

An association like NWABR relies on the support, trust and goodwill of an incredibly wide range of stakeholders. I want to thank our member organizations that provide for the core costs of the association. This is our seed capital that allows us the space to plan conferences, respond to changing needs and issues in the biomedical research community and to be there to listen, support and engage when needed.

I also want to thank all of the members of our conference planning committees and partners. The provision of educational conferences for the biomedical research community is a fundamental part of the work of NWABR. In the 2016/17 year we held five annual and highly specialized conferences: IACUC, IRB, IBC, Security and Crisis Communications Conference and the Crossing the I's Conference (CTI). The CTI conferences were held in Spokane and Portland. We also completed the planning for a new Clinical Research Professionals Conference that was held in October 2017. As an organization we are not specialists in any of these areas. However, our planning committees are. They help us to identify important topics, recruit amazing speakers and ensure that these conferences continue to meet the needs of the biomedical research communities.

Additionally, I need to thank all of our volunteers. This of course includes the planning committees, conference speakers and Board members. However, it also includes the people who stuff envelopes, intern at camps, help at conferences, make food and prepare materials. Really importantly it also includes our judges and mentors that provide the life of the Middle and High school educational programs.



NWABR
Northwest Association for Biomedical Research

I need to particularly thank NWABR's Board members, who have worked with me as the still fairly new Executive Director and the full NWABR team to provide governance, leadership, support and counsel. They have also worked to make the whole "sausage making process" that we call good governance both fun and productive.

I want to thank the researchers and all of the allied staff in the community who go to work every day with the focus of caring for both animal and human research subjects, while working to develop new treatments that improve all of our lives.

Lastly I am humbled to acknowledge our donors and supporters who have been acknowledged in the very long list at the end of this report. These donors and supporters provide us with the resources that enable NWABR's work. I am so totally and absolutely blown away by the fact that you trust us with your time, with your talent and with your treasure.

Lastly, I want to thank the NWABR staff. We are a small team but a lot of stuff gets done because we are so small and we all pitch in to make sure that the most important works gets done – and done well.

2017 IN REVIEW

Year in Review

NWABR has promoted the public's trust in biomedical research and its ethical conduct for 28 years. This past year, NWABR renewed its strategic plan to continue its focus on being nimble and meeting member's needs.

NWABR Programs

Amid all of the changes and improvements during the past financial year, NWABR remained committed to running high quality programs and providing needed member services. Our member services and education programs engage the life science research community including scientists, administrators, physicians, students, teachers, and the general public. Our renewed outlook and vision is based on our commitment to advance the ethical practice of research and the public's trust in this important field.

Member Services

NWABR is first and foremost a membership association. This includes working with our members to advance their understanding of ethical practices by facilitating networking and educational programs where professionals learn from peers and other experts. Promoting the highest possible standards of ethical conduct is at the core of NWABR's work. We place human and animal welfare at the center of medical research.

In 2016, NWABR hosted five professional conferences: Institutional Review Board (IRB), Institutional Biosafety Conference (IBC), Institutional Animal Care and Use Committees (IACUC), Security and Crisis Communications (SCC) and Crossing the I's (CTI in Portland and Spokane). The planning for the new Clinical Research Professional conference was also completed with this actual conference being held in the new financial year. The major focus of each conference centered on bioethics, best practices, emerging trends, and regulatory compliance. Overall, 658 professionals attended these conferences and contributed to the ethics discussion. NWABR estimates that these conference attendees accrued in excess of 4,500 hours of CE credits towards their various professional recertification's.

The new Clinical Research Professional Conference was held in partnership with the Pacific Northwest Chapter of the Association of Clinical Research Professionals. There were 108 attendees at this event in October 2017.



Community and Educational Programs

Additionally, over 1,000 students participated in STEM education programs hosted by NWABR including: Student Bio Expo, the Middle School Contest “Biomedical Breakthroughs and My Life” and our fourth year of Camp BIOMed! During these programs over 400 professionals from the biomedical research industry volunteered their time to support student learning. These programs improved science literacy in our community, and positively impacted thousands of individuals and their families. I need to especially acknowledge the Shoreline Community College, the Infectious Disease Research Institute, Seattle Pacific University, Zymogenetics, Biddle Consulting and the Knossos Foundation for the support that makes all of these programs possible.

Our public outreach efforts hinge on two priority programs called Speaker’s Bureau and Community Conversations. These programs provide opportunities for researchers and medical professionals to interact with the public and explain their research and views on ethics, while engaging the community in problem solving and dialogue. These programs have led to partnerships in Portland, Spokane and Seattle to host Community Conversations that address ethical issues currently impacting medical research and the broader community.

Restructured Membership Options

This last year has been the second under restructured membership options that allow members to choose from a choice of membership levels and services. This new model is working well for NWABR and we are excited that several new organizations have joined or rejoined NWABR.

Finances

I am incredibly pleased to report that in the swirl of all this additional work and refocusing NWABR was able to produce its another financial surplus during this year. The surplus of \$13,060 is modest but represents the second year of surpluses for NWABR. Both the Board and I now believe that NWABR has been able to move to a sustainable operating model that addresses the needs of its members. Staffing is a major cost for NWABR and as Executive Director I want to thank all staff who have worked with me to find ways of doing more with less time during 2017.

NOTABLE HIGHLIGHTS

» **CONVENED FIVE MAJOR REGIONAL CONFERENCES** for IACUC, IRB, IBC, SCC and CTI drawing 658 participants to learn about best practices, regulatory compliance, and lessons learned.

» **FACILITATED NETWORKING AND COMMUNITY BUILDING** through NWABR’s Speaker’s Bureau and Community Conversations Series. Over 1,500 people were served through these programs.

» **INTRODUCED MORE THAN 600 MIDDLE SCHOOL STUDENTS** to the process of drug and medical device development through NWABR’s annual “Biomedical Breakthroughs and My life” essay contest, where every student received personal feedback from a researcher.

» **EXPANDED NWABR’S CAMP BIOMED SUMMER CAMP WHERE 157 CAMPERS** participated in NWABR’s Cancer, Informatics and CSI summer camp programs. Students built scientific knowledge and understanding of biomedical research and worked on presentation skills.

» **CONTINUED NWABR’S SUCCESSFUL BIOEXPO PROGRAM** that engaged nearly 400 students with a pre-eminent bio medically focused science competition. Students can opt as part of this competition to be mentored by a

working scientist to bring their research and engagement with biomedical research to a higher level.

» **HONORED THE PRIDE FOUNDATION, RIC WEILAND AND DR. STEVE REED** at NWABR’s Speak Up For Research Gala. Speak Up For Research has become one of NWABR’s unifying themes as we work with members to ensure ethically based research continues to be recognized as an essential public priority.

» **COLLABORATED WITH MEMBERS TO PERFORM COMMUNITY OUTREACH** through our Community Conversation Series. Partners included Whitworth University, Seattle Children’s Research Institute, Oregon Health & Science University, Portland State University and Kakáo Chocolate and Coffee

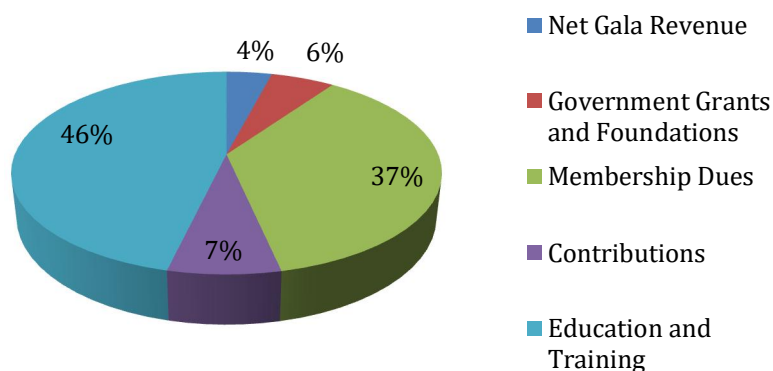
» **ENGAGED 400 PROFESIONALS FROM THE LIFE SCIENCE INDUSTRY** who volunteered their support for NWABR’s Student Bio Expo and Middle School Essay Contest. Volunteers mentored and performed judging activities to support student learning.



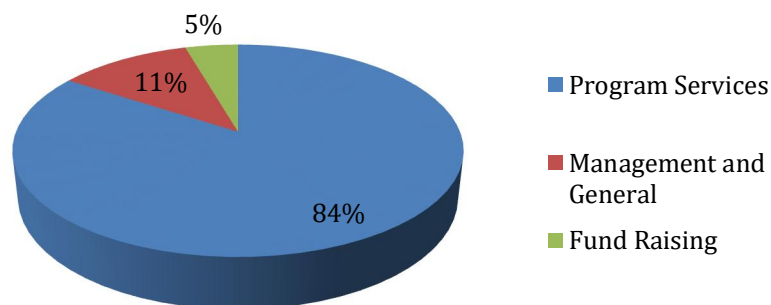
FINANCIALS RESULTS

Northwest Association for Biomedical Research		
Statements of Financial Position		
September 30, 2017 and 2016		
Assets	2017	2016
Current Assets	87,348	69,544
Property and Equipment	62	144
Total Assets	87,410	69,688
Liabilities and Net Assets	2017	2016
Current Liabilities	30,409	25,757
Net Assets	57,001	43,941
Total Liabilities and Net Assets	87,410	69,698

Support and Revenue 2017



Expenses 2017



NWABR
Northwest Association for Biomedical Research

2633 Eastlake Ave E, Suite 302, Seattle, WA 98102

206-957-3337 | executivedirector@nwabr.org | www.nwabr.org

2017 EXECUTIVE COMMITTEE

CAMI GEARHART, JD; President; CEO, Quorum Review, Inc.

CHERYL WEAVER, BA, CCRC, CCRA; Immediate Past President; Administrative Director, Clinical Research Program, Benaroya Research Institute at Virginia Mason

TODD MYERS; Vice President; Principal, Todd Myers Communication

SALLY THOMPSON-IRITANI; Vice President; Director Office of Animal Welfare, University of Washington

BOB ENNES; Treasurer; Chair, Finance Committee; Director, Health Sciences Academic Services & Facilities, University of Washington

SHANNON REYNOLDS, BA, CPIA, RLAT; Regulatory Compliance Specialist, Allen Institute

RICHARD BURROWS, Senior Veterinary Sciences Technologist,

KARI KOSZDIN, D.V.M, DIPL ACLAM, CPIA; Veterinary Medical Officer, VA Puget Sound

2017 BOARD OF DIRECTORS

CHRIS ANTONY, BA; Vice President, Operations, IDRI

JESSICA COHEN, MHS; Director, Office of Research Ethics, PATH

LINDA COLEMAN, JD; Director, Human Research Protection Program, Yale University

JUAN COTTO, BSOCS; Manager of Community Outreach, Fred Hutchinson Cancer Research Center

WILLIAM DALE, PHD; Research Integrity Officer, Oregon Health & Science University

DAVID FORSTER, JD, MA, CIP; Chief Compliance Officer, WIRB-Copernicus Group

KELLY LAWRENCE, JD; Manager and Regulatory Attorney, Seattle Children's

STEPHEN LIBBY, PhD; Research Associate Professor and IBC Chair, University of Washington

ROBERT H. MEALEY, DVM, PhD, DIPL ACVIM; Professor and Dean, Animal Health Research Center, Washington State University

AARON PUTZKE, PhD; Associate Professor of Biology, Whitworth University

JOHN ROLL, PhD; Professor and the Vice Dean for Research for the Elson S. Floyd College of Medicine as well as the Associate Vice President for Health Sciences Research for Washington State University

CHARLOTTE SHUPERT, PhD, CIP; IRB Specialists

KIM STOCKING, DVM, DACLAM; Attending Veterinarian and Director of the Office of Animal Care, Seattle Children's Research Institute

TINA ROGERS, MBA, PhD; Vice President Preclinical Services, SNBL

RAJESH UTHAMANTHIL, DVM, PhD, DACLAM; Attending Veterinarian and Director of Comparative Medicine, Fred Hutchinson Cancer Research Center Animal Health Research Center, Washington State University

PRESTON VAN HOOSER; Review Scientist & Compliance Manager, Office of Animal Welfare, University of Washington

DONALD WANG, MPH; Director of Environmental Health and Safety at the Fred Hutchinson Cancer Research Center

BENJAMIN WILFOND, MD; Director, Treuman Katz Center for Pediatric Bioethics, Seattle Children's Research Institute, Professor, Division of Bioethics and Department of Pediatrics, University of Washington

ORGANIZATIONAL MEMBERS

Platinum Sustaining Members

University of Washington

Quorum Review IRB

Western Institutional Review Board (WIRB)

Gold Sustaining Members

Fred Hutch

Oregon Health & Sciences University

VA Puget Sound

Washington State University

Zymogenetics

Silver Sustaining Members

Todd Myers Communications

Swedish

Benaroya Research Institute

Bloodworks Northwest

SNBL USA

Bronze Sustaining Members

Allen Institute

Center for Infectious Disease Research

IDRI

InVision BioResources

Legacy Health

Montana State University

Multicare Health System

Oregon State UniversityPATH

Portland State University

Seattle Children's Research Institute

Whitworth University

Washington Global Health Alliance

WBBA

Vendor Members

PhRMA

Lucent Medical Systems

Premier Risk Solutions

LabDiet

Linda Montgomery Investigations

Sage Bionetworks

The Jackson Laboratory

The Windward Company

NWABR Staff

VIRGINIA CARHART; Accountant

KEN GORDON; Executive Director

MANSI KAUSHIK, MS; Camp Manager

WENDI RUSSAC, MS; Board Liaison & Camp Teacher

JANIS WIGNALL; BioExpo Manager

JENNIFER WROBLEWSKI, MPH; Public Engagement

NWABR
Northwest Association for Biomedical Research

2633 Eastlake Ave E, Suite 302, Seattle, WA 98102

executivedirector@nwabr.org | www.nwabr.org

206-957-3337 |

Donors and Supporters

As an organization NWABR is incredibly fortunate to be supported by members, donors, attendees at events and sponsors. Sometimes certain individuals or organizations fall into several of these categories. The following is a combined list of all of NWABR's supporters over the last year. We have grouped multiple contributions – so the donor's true support for NWABR can be seen.

The Fundamental Building Blocks - The ACGT level – contributors up to \$1,000

Adams, Lizbeth; American Physiological Society; Angeles, Carrie; Beckman, Anna Marie; Bell, Susan; Bernacky, Bruce; Borgatta, Lynn; Burroughs, Catherine; Burrows, Richard; Byrne, Jennifer; Cannon, John; Carter, Darrick; Caspary, Guy; Casper, Corey; Chalupny, Jan; Chambers, Nancy; Chiarelli, Dominic; Cohen, Jessica; Cole, Jen; Coler, Rhea; Conte, Soraya; Cordial, Steve; Davis, Caroline; Dernell, William; Egge, Amanda; Ennes, Bob; Farrer, Denise; Feagin, Jean; Fraczek, Eudora; Garland, Debra; Gilbert, Steven and Janis; Godoy-Gonzalez, Mario; Grienauer, Michelle; Haba, Cindy; Hansen, Karen; Harikrishnan, Seetharaman; Higby, Christian; Higley, Amanda; Hudson, Krystalyn; Jacobson, Gary; Jonlin, Erica; Kaushik, Mansi; Kelly, Scott; Kiem, Hans-Peter; Kirby, Seth; Lawrence, Kelly; Levine, Dena; Libby, Stephen; Linda Montgomery Investigations; Lindsay, Anna; Lockard, Laura; Lucent Medical Systems; McCormack, Melissa; Miles, Victoria; Morton, Jackie;

Nelson, Sarah; Parette, Danielle; Parish, Tanya; Parrish, Mitchell; Pekow, Cindy; PhRMA; Purina LabDiet; Reed, Steve; Reynolds, Shannon; Rogers, Tina; Roll, John; Sage Bionetworks; Schoentrup, Lee; Schulman IRB; Scott, Meghan; Shields, Bragdon; Shupert, Charlotte; Slatte, Greg Vandana; Socha, David; Sprugel, Katie; Stickel, Sheilah; Stitzhal, David and Laurel; Stocking, Kim; The Jackson Laboratory; The Windward Company; Thompson-Iritani, Sally; Tully, Megan; Utey, Rod; Van Hooser, Preston; Wang, Donald; Weber, Traci; Weckin, Hope; Westby, Christian; Wicomb, Winston; Wignall, Janis; Wroblewski, Ann; Wroblewski, Jen.

The Variability of Life –The Gene Level – contributors from \$1,000 and up to \$5,000

Allen Institute; Benaroya Research Institute; Biddle, Jane; Center for Infectious Disease Research; Gearhart, Cami; Gordon, Ken; Infectious Disease Research Institute; InVision BioResources; Koszdin, Kari; Legacy Health Systems; Montana State University; Multicare Health System IRB; Oregon State University; PATH; Pekow Family Foundation; Portland State University; Rose, Lynn and Tim; Seattle Childrens Research Institute; Weaver, Cheryl; Whitworth University; Yale.

The Pattern of Life – The Chromosome Level – contributors from \$5,000 and up to \$15,000

Alvord, Nancy; Bloodworks Northwest (Puget Sound Blood Center); Fred Hutch Cancer

Research Center; Oregon Health and Sciences University (OHSU); SNBL USA Ltd; Swedish Health Services; Todd Myers Communications; VA Puget Sound Health Care System; Washington State University; ZymoGenetics- A Bristol-Myers Squibb Company.

The Full Expression of Life – The Genome Level – contributors from \$15,000 and up

Dean Witter Foundation; Quorum Review IRB; The Knossos Foundation; University of Washington; Western Institutional Review Board; WIRB-Copernicus Group.

NWABR
Northwest Association for Biomedical Research

2633 Eastlake Ave E, Suite 302, Seattle, WA 98102
executivedirector@nwabr.org | www.nwabr.org

206-957-3337 |

CONCLUSION

The Board and staff of NWABR wants to thank all NWABR members, the former NWABR staff, current and former volunteers and the Biomedical Research Community for all of their support over this year. We sincerely thank you for all of your support and thank you for your commitment to Biomedical Research.



A winning entry from the 2017 Student Bio Expo. These students participated in the new indigenous knowledge category that was made possible by the Dean Witter Foundation.

NWABR
Northwest Association for Biomedical Research

2633 Eastlake Ave E, Suite 302, Seattle, WA 98102

206-957-3337 | executivedirector@nwabr.org | www.nwabr.org