

WORKSHOPS ACCESSIBLE DIALOGUE EDUCATION
STUDENTS CONNECTING FACILITATION
COMMUNICATION RESPONSIVE PARTNERSHIPS
TEACHERS CONFERENCES COMMUNITY NETWORKING
WORKSHOPS ACCESSIBLE DIALOGUE
STUDENTS CONNECTING FACILITATION
COMMUNICATION RESPONSIVE PARTNER-
TEACHERS CONFERENCES COMMUNITY
WORKING WORKSHOPS ACCESSIBLE DIA-

NWABR

Northwest Association for Biomedical Research

2018 ANNUAL REPORT

S COMMUNITY NETWORKING WORKSHOPS
SSIBLE DIALOGUE EDUCATION STUDENTS
CONNECTING FACILITATION COMMUNICATION RE-
NSIVE PARTNERSHIPS TEACHERS CONFER-
ES COMMUNITY NETWORKING WORKSHOPS
SSIBLE DIALOGUE EDUCATION STUDENTS

NWABR

Northwest Association for Biomedical Research



Thirty years ago, the Presidents and CEOs of Pacific Northwest's most respected research facilities recognized that public trust in the integrity of research was essential to the future of medical discovery in our region. NWABR was born out of that commitment and stands today as the Northwest's leading voice for promoting the public's trust in biomedical research and its ethical conduct.



WHY ARE WE HERE?

Our mission is to promote the public's trust in biomedical research and its ethical conduct.

NWABR believes that a strong and vibrant biomedical research community is essential to the health and betterment of individuals and communities. The future of both community and individual health relies on a partnership between researchers, their human subjects, their non-human subjects, physicians and the public at large. NWABR exists to facilitate education and dialogue, to promote ethical practices in research, to provide opportunities for young people to explore biomedical careers and to provide venues where the public can gain insights into the research that will change all of our lives. As an association, *NWABR is a reflection of the values of our members and the life science research community in the Pacific Northwest.*

The core work of NWABR includes convening educational conferences for our members that focus on ethical research with, and care for, laboratory animals and human subjects; creating space for dialogue that advances understanding about life science research; facilitating educational opportunities for our community; and introducing students to bioethical frameworks, career pathways and biomedical research.

EXECUTIVE DIRECTOR'S REPORT

Thank you

An association like NWABR relies on the support, trust and goodwill of an incredibly wide range of stakeholders. I want to thank our member organizations that provide for the core costs of the association. This is our seed capital that allows us the space to plan conferences, respond to changing needs and issues in the biomedical research community and to be there to listen, support and engage when needed.

I also want to thank all of the members of our conference planning committees and partners. The provision of educational conferences for the biomedical research community is a fundamental part of the work of NWABR. In the 2017/18 year we held seven annual and highly specialized conferences: IACUC, IRB, IBC, Security and Crisis Communications Conference, Crossing the I's Conference (in Spokane and Portland) and a new Clinical Research Professionals Conference. As an organization we are not specialists in any of these areas. However, our planning committees are. They help us to identify important topics, recruit amazing speakers and ensure that these conferences continue to meet the needs of the biomedical research communities.

Additionally, I need to thank all of our volunteers. This of course includes the planning committees, conference speakers and Board members. However, it also includes the people who stuff envelopes, intern at camps, help at conferences, make food and prepare materials. Really importantly it also includes our judges and mentors that provide the life of the Middle and High school educational programs.

I need to particularly thank NWABR's Board members, who have worked with me and the full NWABR team to provide governance, leadership, support and counsel. They have also worked to make the whole "sausage making process" that we call good governance both fun and productive.



I want to thank the researchers and all of the allied staff in the community who go to work every day with the focus of caring for both animal and human research subjects, while working to develop new treatments that improve all of our lives.

Lastly, I am humbled to acknowledge our donors and supporters who have been acknowledged in the very long list at the end of this report. These donors and supporters provide us with the resources that enable NWABR's work. I am so totally and absolutely blown away by the fact that you trust us with your time, with your talent and with your treasure.

Lastly, I want to thank the NWABR staff. We are a small team but a lot of stuff gets done because we are so small and we all pitch in to make sure that the most important works gets done – and done well.

As NWABR enters its 30th year of operations the core of our activities remains unchanged. There are a number of changes with educational and outreach programs designed to both improve impact and sustainability. Of particular note the Bio Expo program is now being taken over by the Shoreline Community College who have the ability to sustain and grow this student outreach. Although there has been some change in the program makeup – the overall intent of NWABR's programs remain unchanged – Promoting the public's trust in biomedical research, and its ethical conduct.

2018 IN REVIEW

Year in Review

NWABR has promoted the public's trust in biomedical research and its ethical conduct for 30 years. This past year, NWABR renewed its strategic plan to continue its focus on being nimble and meeting member's needs.

NWABR Programs

Amid all of the changes and improvements during the past financial year, NWABR remained committed to running high quality programs and providing needed member services. Our member services and education programs engage the life science research community including scientists, administrators, physicians, students, teachers, and the general public. Our renewed outlook and vision is based on our commitment to advance the ethical practice of research and the public's trust in this important field.

Member Services

NWABR is first and foremost a membership association. This includes working with our members to advance their understanding of ethical practices by facilitating networking and educational programs where professionals learn from peers and other experts. Promoting the highest possible standards of ethical conduct is at the core of NWABR's work. We place human and animal welfare at the center of medical research.

In 2017/18, NWABR hosted seven professional conferences: Institutional Review Board (IRB), Institutional Biosafety Conference (IBC), Institutional Animal Care and Use Committees (IACUC), Security and Crisis Communications (SCC), Crossing the I's (CTI in Portland and Spokane) and Clinical Research Professionals (CRP). The major focus of each conference centered on bioethics, best practices, emerging trends, and regulatory compliance. Overall, 532 professionals attended these conferences and contributed to the ethics discussion. NWABR estimates that these conference attendees accrued in excess of 3,500 hours of CE credits towards their various professional recertification's.

For the 2018/19 year we are planning to alternate a bi-annual security conference with a communications conference (to be held in September 2019). We are also partnering to co-host a second CRP conference in Portland in conjunction with OHSU, PNWACRP and the Oregon branch of SOCRA.

Community and Educational Programs

Additionally, over 1,000 students participated in STEM education programs hosted by NWABR including: Student Bio Expo, the Middle School Contest "Biomedical Breakthroughs and My Life" and our fifth year of Camp BIOMed! During these programs over 400 professionals from the biomedical research industry volunteered their time to support student learning.



These programs improved science literacy in our community, and positively impacted thousands of individuals and their families. I need to especially acknowledge the Shoreline Community College, the Infectious Disease Research Institute, Seattle Pacific University, Zymogenetics, Biddle Consulting and the Knossos Foundation for the support that makes all of these programs possible.

Our public outreach efforts hinge on two priority programs called Speaker's Bureau and Community Conversations. These programs provide opportunities for researchers and medical professionals to interact with the public and explain their research and views on ethics, while engaging the community in problem solving and dialogue. These programs have led to partnerships in Portland, Spokane and Seattle to host Community Conversations that address ethical issues currently impacting medical research and the broader community.

For 2018/19 the K12 educational work and the community outreach will be revised to further increase program impact and to also minimize some costs and risks to NWABR.

Restructured Membership Options

This last year has been the third under restructured membership options that allow members to choose from a choice of membership levels and services. This new model is working well for NWABR and we are excited that several new organizations have joined or rejoined NWABR.

Finances

I am incredibly pleased to report that in the swirl of all this additional work and refocusing NWABR was able to produce another year where we essentially broke even. There was a small loss of approximately \$4,000 and we also booked several thousand dollars of income that will be reported in the 2018/19 year. Both the Board and I now believe that NWABR has been able to move to a sustainable operating model that addresses the needs of its members. Staffing is a major cost for NWABR and as Executive Director I want to thank all staff who have worked with me to find ways of doing more with less time during 2018.

NOTABLE HIGHLIGHTS

» CONVENED SEVEN MAJOR REGIONAL CONFERENCES

for IACUC, IRB, IBC, SCC, CTI and ACRP drawing 532 participants to learn about best practices, regulatory compliance, and lessons learned.

» FACILITATED NETWORKING AND COMMUNITY

BUILDING through NWABR's Speaker's Bureau and Community Conversations Series. Over 1,500 people were served through these programs.

» INTRODUCED MORE THAN 200 MIDDLE SCHOOL

STUDENTS to the process of drug and medical device development through NWABR's annual "Biomedical Breakthroughs and My life" essay contest, where every student received personal feedback from a researcher.

» EXPANDED NWABR'S CAMP BIOMED SUMMER CAMP

WHERE 162 CAMPERS participated in NWABR's Cancer, Bioinformatics and CSI summer camp programs. Students built scientific knowledge and understanding of biomedical research and worked on presentation skills.

» CONTINUED NWABR'S SUCCESSFUL BIOEXPO

PROGRAM that engaged nearly 400 students with a pre-eminent biomedically focused science competition. Students can opt as part of this competition to be mentored by a

working scientist to bring their research and engagement with biomedical research to a higher level.

» HONORED PAUL AND ALISON FRASE AND DR. CASEY

CHILDERS at NWABR's Speak Up For Research Gala. Speak Up For Research has become one of NWABR's unifying themes as we work with members to ensure that ethically based research continues to be recognized as an essential public priority.

» COLLABORATED WITH MEMBERS TO PERFORM

COMMUNITY OUTREACH through our Community Conversation Series. Partners included Whitworth University, Seattle Children's Research Institute, Oregon Health & Science University, Portland State University and Kakáo Chocolate and Coffee

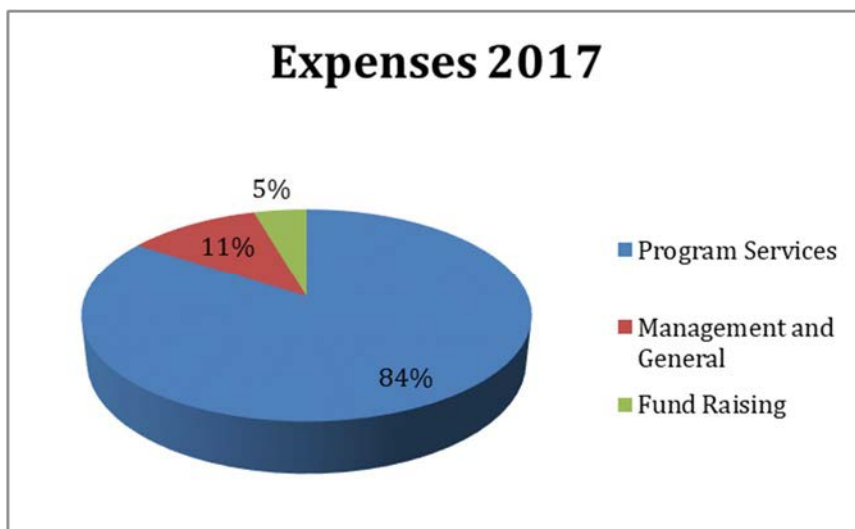
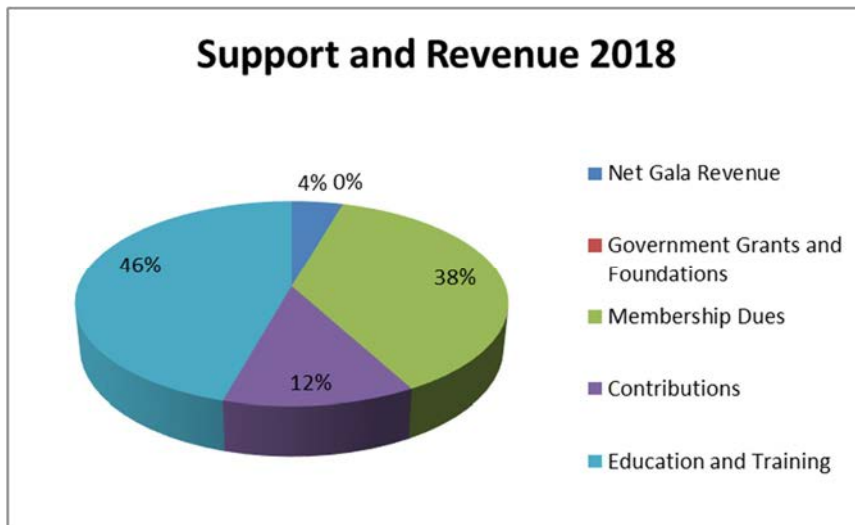
» ENGAGED 400 PROFESSIONALS FROM THE LIFE SCIENCE

INDUSTRY who volunteered their support for NWABR's Student Bio Expo and Middle School Essay Contest. Volunteers mentored and performed judging activities to support student learning.



FINANCIALS RESULTS

Northwest Association for Biomedical Research		
Statements of Financial Position		
September 30, 2018 and 2017		
Assets	2018	2017
Current Assets	93,268	87,348
Property and Equipment	-	62
Total Assets	93,268	87,410
Liabilities and Net Assets		2017
Current Liabilities	40,579	30,409
Net Assets	52,689	57,001
Total Liabilities and Net Assets	93,268	87,410



NWABR
Northwest Association for Biomedical Research

2633 Eastlake Ave E, Suite 302, Seattle, WA 98102

206-957-3337 | executivedirector@nwabr.org | www.nwabr.org

2018 EXECUTIVE COMMITTEE

CAMI GEARHART, JD; President; CEO, Quorum Review, Inc.

CHERYL WEAVER, BA, CCRC, CCRA; Immediate Past President; Administrative Director, Clinical Research Program, Benaroya Research Institute at Virginia Mason

SALLY THOMPSON-IRITANI, DVM, PhD; Vice President; Director Office of Animal Welfare, University of Washington

BOB ENNES, BA; Treasurer; Chair, Finance Committee; Director, Health Sciences Academic Services & Facilities, University of Washington

SHANNON REYNOLDS, BA, CPIA, RLAT; Regulatory Compliance Specialist, Allen Institute

RICHARD BURROWS, Senior Veterinary Sciences Technologist,

KARI KOSZDIN, D.V.M, DIPL ACLAM, CPIA; Veterinary Medical Officer, VA Puget Sound

2018 BOARD OF DIRECTORS

CHRIS ANTONY, BA; Vice President, Operations, IDRI

JESSICA COHEN, MHS; Director, Office of Research Ethics, PATH

LINDA COLEMAN, JD; Director, Human Research Protection Program, Yale University

JUAN COTTO, BSOCS; Director of Social Impact, Bloodworks NW

KARA DROLET, PhD; Associate Vice President, Research Integrity Office, Oregon Health & Science University

ANITA EISENSTADT, JD; Assistant Vice President Research Integrity, Oregon State University

EMILY FIRMAN, MPH, MSW; Senior Program Officer, Arcora Foundation

DAVID FORSTER, JD, MA, CIP; Chief Compliance Officer, WIRB-Copernicus Group

DAVID HOLMGREN; IRB Manager, Research Integrity Office, Oregon Health & Science University

MIKE KLUZIK, MHS; Director, Office of Research Assurances at Washington State University

JENNIFER LANE, DVM; Director, Animal Resource Center and the Attending Veterinarian at Montana State University

KELLY LAWRENCE, JD; Manager and Regulatory Attorney, Seattle Children's

STEPHEN LIBBY, PhD; Research Associate Professor and IBC Chair, University of Washington

ROBERT H. MEALEY, DVM, PhD, DIPL ACVIM; Professor and Dean, Animal Health Research Center, Washington State University (Retired 2018)

LAURA PEARSON, BS; IACUC and IBC Administrator, CIDR (Retired 2018)

HEATHER PETERS; IRB Coordinator for the MultiCare Health System

AARON PUTZKE, PhD; Associate Professor of Biology, Whitworth University

TINA ROGERS; MBA, PhD; Vice President Preclinical Services, Altasciences/SNBL

JOHN ROLL, PhD; Professor and the Vice Dean for Research for the Elson S. Floyd College of Medicine as well as the Associate Vice President for Health Sciences Research for Washington State University

CHARLOTTE SHUPERT, PhD, CIP; IRB Specialists

KIM STOCKING, DVM, DACLAM; Director Office of Animal Welfare, University of Washington

RAJESH UTHAMANTHIL, DVM, PhD, DACLAM; Attending Veterinarian and Director of Comparative Medicine, Fred Hutchinson Cancer Research Center

ORGANIZATIONAL MEMBERS

Platinum Sustaining Members

Advarra

Quorum Review IRB

University of Washington

Western Institutional Review Board (WIRB)

Gold Sustaining Members

Fred Hutchinson Cancer Research Center

Oregon Health & Sciences University

VA Puget Sound

Washington State University

Silver Sustaining Members

Altasciences/SNBL USA

Benaroya Research Institute

Bloodworks Northwest

Swedish

Bronze Sustaining Members

Allen Institute

Arcora

Center for Infectious Disease Research

IDRI

InVision BioResources

Montana State University

Multicare Health System

Oregon State University

PATH

PhRMA

Portland State University

Seattle Children's Research Institute

Whitworth University

Washington Global Health Alliance

WBBA

Vendor Members

Charles River

Lucent Medical Systems

LabDiet/Purina

Linda Montgomery Investigations

Sage Bionetworks

The Jackson Laboratory

The Windward Company

NWABR Staff

VIRGINIA CARHART; Accountant

KEN GORDON; Executive Director

MANSI KAUSHIK, MS; Camp Manager

WENDI RUSSAC, MS; Education Programs

JENNIFER WROBLEWSKI, MPH; Public Engagement Manager

NWABR
Northwest Association for Biomedical Research

2633 Eastlake Ave E, Suite 302, Seattle, WA 98102
executivedirector@nwabr.org | www.nwabr.org

2018 BOARD OF DIRECTORS (Continued)

PRESTON VAN HOOSER; Review Scientist & Compliance Manager, Office of Animal Welfare, University of Washington

DONALD WANG, MPH; Director of Environmental Health and Safety at the Fred Hutchinson Cancer Research Center

BENJAMIN WILFOND, MD; Director, Treuman Katz Center for Pediatric Bioethics, Seattle Children's Research Institute, Professor, Division of Bioethics and Department of Pediatrics, University of Washington

GREGORY YANDL, MBA; Director of Research Finance for the Swedish Center for Research Innovation

Donors and Supporters

As an organization NWABR is incredibly fortunate to be supported by members, donors, attendees at events and sponsors. Sometimes certain individuals or organizations fall into several of these categories. The following is a combined list of all of NWABR's supporters over the last year. We have grouped multiple contributions – so the donor's true support for NWABR can be seen.

The Fundamental Building Blocks - The ACGT level – contributions up to \$1,000

Lizbeth Adams, Roger and Evelyn Ainsley-Iritani, Christopher Antony, Yuki Aoki, Arcorra Foundation, Nourredine Azouaou, David Babaian, Tyler Barcelli, Anna Marie Beckman, Cynthia Bennett, Thea Brabb, Max Brown, Andrew Burich, Richard Burrows, Bruce Busby, Jan Chalupny, Charles River Laboratories, Dominic Chiarelli, Shari Childers, Evelyn Clarke, Jessica Cohen, Jen and Peter Cole, Linda Coleman, Darrin Collins, Nora Coronado, Frank Eichmann, Anita Eisenstadt, Ellen Evans, Jean Feagin, Emily and Erik Firman, Laura Flores

Cantrell, Debra Garland, Steven and Janis Gilbert, Ireta Graube, Anthony Gray, Jaclyn Greenberg, Michelle Griener, Vance Hall, George Haluska, Karen Hansen, Sara Hegge, David Holmgren, Kirk Hoover, Rachel Iritani, Tad Iritani, Eiko Iritani, Katherine and Barry Iritani-Wong, Laury Istvan, Aarthi Iyert, Gary Jacobson, Cindy Jatul, Erica Jonlin, Carl Kaiser, Mansi and Bhudev Kaushik-Vats, Ed Kelly, Richard Ladner, Jennifer Lane, Dianne Lattemann, Kelly Lawrence, Dena Levine, Steve Libby, Laura Lockard, Bob Mealey, M J Mustari, Todd Myers, Holly Nguyen, Steve Niemi, Shannon Osborne, Bruce Park, Laura Pearson, Heather Peters, Tara Polek, Purina Mills Lab Diet, Aaron Putzke, Rainier Reyes, Shannon Reynolds, James Riddle, Gordon Roble, Tina Rogers, Lynn and Tim Rose, Stephen Rosenfeld, Sage Bionetworks, Lee Schoentrup, Meghan Scott, Conner Sessions, Julie Severson, Debbie Shiozaki, Charlotte Shupert, Hannah Sidney, Angela Silva, Greg and Vandana Slatter, Caroline Socha, Abra Soule, Laurel and David Stitzhal, Jane Sullivan, Kambria Tabor, Kari

Tetrault, Jeanne Ting Chowning, Raj Uthamanthil, Rod Utley, Preston Van Hooser, WA Secretary of State, Donald Wang, Traci Weber, Hope Wechkin, Reitha Weeks, Christine Wells, Janis Wignall, Benjamin Wilfond, Allison Witter Frey, Melia Wong, Mary Wong, Jen Wroblewski, Gregory Yandl, Nicolas Zea.

The Variability of Life –The Gene Level – contributors from \$1,000 and up to \$5,000

Allen Institute for Brain Science, Arcora Foundation, Benaroya Research Institute, Jane Biddle, Jeremy Block, Bloodworks Northwest, Bristol-Myers Squibb, Center for Infectious Disease, Katharyn Gerlich, Ken Gordon, Infectious Disease Research Institute, InVision BioResources, Jackson Laboratory, Kari Koszdin, Montana State University, Multicare Health - IRB, Oregon State University, Cindy Pekow, PhRMA, Portland State University, Paul and Alison Rockett-Frase, John Roll, Seattle Children's Research Institute, Kim Stocking, Sally

NWABR
Northwest Association for Biomedical Research

2633 Eastlake Ave E, Suite 302, Seattle, WA 98102
executivedirector@nwabr.org | www.nwabr.org

206-957-3337 |

Thompson-Iritani, Cheryl Weaver, Max and Marcia Witter.

The Pattern of Life – The Chromosome Level – contributors from \$5,000 and up to \$15,000

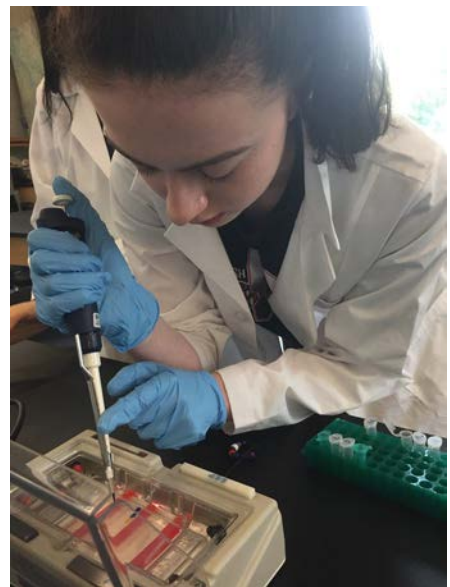
Advarra, Dean Witter Foundation, Fred Hutchinson Cancer Research Center, Cami Gearhart, Oregon Health & Science University, The NLA Group, Veterans Affairs Puget Sound Health Care, Washington State University.

The Full Expression of Life – The Genome Level – contributors from \$15,000 and up

The Knossos Foundation, Quorum Review, University of Washington, WIRB-Copernicus Group.

The following photographs are from students taking part in the 2018 CampBiomed Summer camp program. In 2018 students had a choice of four different one week long camps that focused on Cancer, CSI, Bioinformatics or Genetics.

Donations received during the year supported students to attend camp and also helped fund scholarships.



Gel Electrophoresis for CSI



Students start a heart dissection for CSI



Bacterial transformation for Genetics



More heart dissection!



Chromatography for Genetics

NWABR
Northwest Association for Biomedical Research

2633 Eastlake Ave E, Suite 302, Seattle, WA 98102

206-957-3337 | executivedirector@nwabr.org | www.nwabr.org

WORKSHOPS ACCESSIBLE DIALOGUE EDUCATION
STUDENTS CONNECTING FACILITATION
COMMUNICATION RESPONSIVE PARTNERSHIPS
TEACHERS CONFERENCES COMMUNITY NETWORKING
WORKSHOPS ACCESSIBLE DIALOGUE
STUDENTS CONNECTING FACILITATION
COMMUNICATION RESPONSIVE PARTNER-
TEACHERS CONFERENCES COMMUNITY
WORKING WORKSHOPS ACCESSIBLE DIA-

NWABR

Northwest Association for Biomedical Research

2018 ANNUAL REPORT

S COMMUNITY NETWORKING WORKSHOPS
SSIBLE DIALOGUE EDUCATION STUDENTS
CONNECTING FACILITATION COMMUNICATION RE-
NSIVE PARTNERSHIPS TEACHERS CONFER-
ES COMMUNITY NETWORKING WORKSHOPS
SSIBLE DIALOGUE EDUCATION STUDENTS

NWABR

Northwest Association for Biomedical Research



Thirty years ago, the Presidents and CEOs of Pacific Northwest's most respected research facilities recognized that public trust in the integrity of research was essential to the future of medical discovery in our region. NWABR was born out of that commitment and stands today as the Northwest's leading voice for promoting the public's trust in biomedical research and its ethical conduct.



WHY ARE WE HERE?

Our mission is to promote the public's trust in biomedical research and its ethical conduct.

NWABR believes that a strong and vibrant biomedical research community is essential to the health and betterment of individuals and communities. The future of both community and individual health relies on a partnership between researchers, their human subjects, their non-human subjects, physicians and the public at large. NWABR exists to facilitate education and dialogue, to promote ethical practices in research, to provide opportunities for young people to explore biomedical careers and to provide venues where the public can gain insights into the research that will change all of our lives. As an association, *NWABR is a reflection of the values of our members and the life science research community in the Pacific Northwest.*

The core work of NWABR includes convening educational conferences for our members that focus on ethical research with, and care for, laboratory animals and human subjects; creating space for dialogue that advances understanding about life science research; facilitating educational opportunities for our community; and introducing students to bioethical frameworks, career pathways and biomedical research.

EXECUTIVE DIRECTOR'S REPORT

Thank you

An association like NWABR relies on the support, trust and goodwill of an incredibly wide range of stakeholders. I want to thank our member organizations that provide for the core costs of the association. This is our seed capital that allows us the space to plan conferences, respond to changing needs and issues in the biomedical research community and to be there to listen, support and engage when needed.

I also want to thank all of the members of our conference planning committees and partners. The provision of educational conferences for the biomedical research community is a fundamental part of the work of NWABR. In the 2017/18 year we held seven annual and highly specialized conferences: IACUC, IRB, IBC, Security and Crisis Communications Conference, Crossing the I's Conference (in Spokane and Portland) and a new Clinical Research Professionals Conference. As an organization we are not specialists in any of these areas. However, our planning committees are. They help us to identify important topics, recruit amazing speakers and ensure that these conferences continue to meet the needs of the biomedical research communities.

Additionally, I need to thank all of our volunteers. This of course includes the planning committees, conference speakers and Board members. However, it also includes the people who stuff envelopes, intern at camps, help at conferences, make food and prepare materials. Really importantly it also includes our judges and mentors that provide the life of the Middle and High school educational programs.

I need to particularly thank NWABR's Board members, who have worked with me and the full NWABR team to provide governance, leadership, support and counsel. They have also worked to make the whole "sausage making process" that we call good governance both fun and productive.



I want to thank the researchers and all of the allied staff in the community who go to work every day with the focus of caring for both animal and human research subjects, while working to develop new treatments that improve all of our lives.

Lastly, I am humbled to acknowledge our donors and supporters who have been acknowledged in the very long list at the end of this report. These donors and supporters provide us with the resources that enable NWABR's work. I am so totally and absolutely blown away by the fact that you trust us with your time, with your talent and with your treasure.

Lastly, I want to thank the NWABR staff. We are a small team but a lot of stuff gets done because we are so small and we all pitch in to make sure that the most important works gets done – and done well.

As NWABR enters its 30th year of operations the core of our activities remains unchanged. There are a number of changes with educational and outreach programs designed to both improve impact and sustainability. Of particular note the Bio Expo program is now being taken over by the Shoreline Community College who have the ability to sustain and grow this student outreach. Although there has been some change in the program makeup – the overall intent of NWABR's programs remain unchanged – Promoting the public's trust in biomedical research, and its ethical conduct.

2018 IN REVIEW

Year in Review

NWABR has promoted the public's trust in biomedical research and its ethical conduct for 30 years. This past year, NWABR renewed its strategic plan to continue its focus on being nimble and meeting member's needs.

NWABR Programs

Amid all of the changes and improvements during the past financial year, NWABR remained committed to running high quality programs and providing needed member services. Our member services and education programs engage the life science research community including scientists, administrators, physicians, students, teachers, and the general public. Our renewed outlook and vision is based on our commitment to advance the ethical practice of research and the public's trust in this important field.

Member Services

NWABR is first and foremost a membership association. This includes working with our members to advance their understanding of ethical practices by facilitating networking and educational programs where professionals learn from peers and other experts. Promoting the highest possible standards of ethical conduct is at the core of NWABR's work. We place human and animal welfare at the center of medical research.

In 2017/18, NWABR hosted seven professional conferences: Institutional Review Board (IRB), Institutional Biosafety Conference (IBC), Institutional Animal Care and Use Committees (IACUC), Security and Crisis Communications (SCC), Crossing the I's (CTI in Portland and Spokane) and Clinical Research Professionals (CRP). The major focus of each conference centered on bioethics, best practices, emerging trends, and regulatory compliance. Overall, 532 professionals attended these conferences and contributed to the ethics discussion. NWABR estimates that these conference attendees accrued in excess of 3,500 hours of CE credits towards their various professional recertification's.

For the 2018/19 year we are planning to alternate a bi-annual security conference with a communications conference (to be held in September 2019). We are also partnering to co-host a second CRP conference in Portland in conjunction with OHSU, PNWACRP and the Oregon branch of SOCRA.

Community and Educational Programs

Additionally, over 1,000 students participated in STEM education programs hosted by NWABR including: Student Bio Expo, the Middle School Contest "Biomedical Breakthroughs and My Life" and our fifth year of Camp BIOMed! During these programs over 400 professionals from the biomedical research industry volunteered their time to support student learning.



These programs improved science literacy in our community, and positively impacted thousands of individuals and their families. I need to especially acknowledge the Shoreline Community College, the Infectious Disease Research Institute, Seattle Pacific University, Zymogenetics, Biddle Consulting and the Knossos Foundation for the support that makes all of these programs possible.

Our public outreach efforts hinge on two priority programs called Speaker's Bureau and Community Conversations. These programs provide opportunities for researchers and medical professionals to interact with the public and explain their research and views on ethics, while engaging the community in problem solving and dialogue. These programs have led to partnerships in Portland, Spokane and Seattle to host Community Conversations that address ethical issues currently impacting medical research and the broader community.

For 2018/19 the K12 educational work and the community outreach will be revised to further increase program impact and to also minimize some costs and risks to NWABR.

Restructured Membership Options

This last year has been the third under restructured membership options that allow members to choose from a choice of membership levels and services. This new model is working well for NWABR and we are excited that several new organizations have joined or rejoined NWABR.

Finances

I am incredibly pleased to report that in the swirl of all this additional work and refocusing NWABR was able to produce another year where we essentially broke even. There was a small loss of approximately \$4,000 and we also booked several thousand dollars of income that will be reported in the 2018/19 year. Both the Board and I now believe that NWABR has been able to move to a sustainable operating model that addresses the needs of its members. Staffing is a major cost for NWABR and as Executive Director I want to thank all staff who have worked with me to find ways of doing more with less time during 2018.

NOTABLE HIGHLIGHTS

» CONVENED SEVEN MAJOR REGIONAL CONFERENCES

for IACUC, IRB, IBC, SCC, CTI and ACRP drawing 532 participants to learn about best practices, regulatory compliance, and lessons learned.

» FACILITATED NETWORKING AND COMMUNITY

BUILDING through NWABR's Speaker's Bureau and Community Conversations Series. Over 1,500 people were served through these programs.

» INTRODUCED MORE THAN 200 MIDDLE SCHOOL

STUDENTS to the process of drug and medical device development through NWABR's annual "Biomedical Breakthroughs and My life" essay contest, where every student received personal feedback from a researcher.

» EXPANDED NWABR'S CAMP BIOMED SUMMER CAMP

WHERE 162 CAMPERS participated in NWABR's Cancer, Bioinformatics and CSI summer camp programs. Students built scientific knowledge and understanding of biomedical research and worked on presentation skills.

» CONTINUED NWABR'S SUCCESSFUL BIOEXPO

PROGRAM that engaged nearly 400 students with a pre-eminent biomedically focused science competition. Students can opt as part of this competition to be mentored by a

working scientist to bring their research and engagement with biomedical research to a higher level.

» HONORED PAUL AND ALISON FRASE AND DR. CASEY

CHILDERS at NWABR's Speak Up For Research Gala. Speak Up For Research has become one of NWABR's unifying themes as we work with members to ensure that ethically based research continues to be recognized as an essential public priority.

» COLLABORATED WITH MEMBERS TO PERFORM

COMMUNITY OUTREACH through our Community Conversation Series. Partners included Whitworth University, Seattle Children's Research Institute, Oregon Health & Science University, Portland State University and Kakáo Chocolate and Coffee

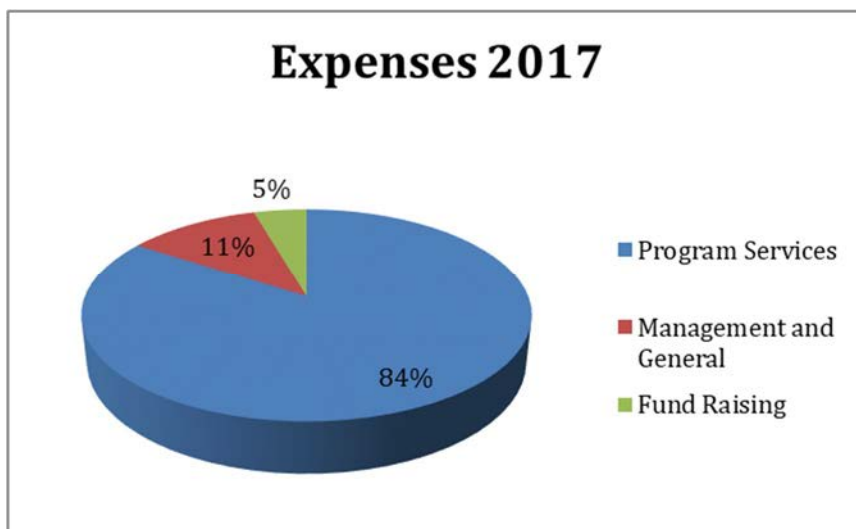
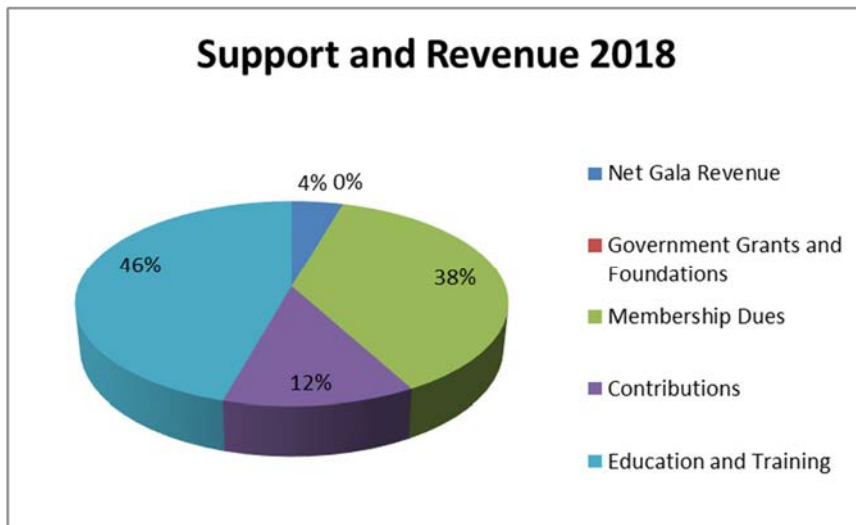
» ENGAGED 400 PROFESSIONALS FROM THE LIFE SCIENCE

INDUSTRY who volunteered their support for NWABR's Student Bio Expo and Middle School Essay Contest. Volunteers mentored and performed judging activities to support student learning.



FINANCIALS RESULTS

Northwest Association for Biomedical Research		
Statements of Financial Position		
September 30, 2018 and 2017		
Assets	2018	2017
Current Assets	93,268	87,348
Property and Equipment	-	62
Total Assets	93,268	87,410
Liabilities and Net Assets		2017
Current Liabilities	40,579	30,409
Net Assets	52,689	57,001
Total Liabilities and Net Assets	93,268	87,410



2018 EXECUTIVE COMMITTEE

CAMI GEARHART, JD; President; CEO, Quorum Review, Inc.
CHERYL WEAVER, BA, CCRC, CCRA; Immediate Past President; Administrative Director, Clinical Research Program, Benaroya Research Institute at Virginia Mason
SALLY THOMPSON-IRITANI, DVM, PhD; Vice President; Director Office of Animal Welfare, University of Washington
BOB ENNES, BA; Treasurer; Chair, Finance Committee; Director, Health Sciences Academic Services & Facilities, University of Washington
SHANNON REYNOLDS, BA, CPIA, RLAT; Regulatory Compliance Specialist, Allen Institute
RICHARD BURROWS, Senior Veterinary Sciences Technologist,
KARI KOSZDIN, D.V.M, DIPL ACLAM, CPIA; Veterinary Medical Officer, VA Puget Sound

2018 BOARD OF DIRECTORS

CHRIS ANTONY, BA; Vice President, Operations, IDRI
JESSICA COHEN, MHS; Director, Office of Research Ethics, PATH
LINDA COLEMAN, JD; Director, Human Research Protection Program, Yale University
JUAN COTTO, BSOCS; Director of Social Impact, Bloodworks NW
KARA DROLET, PhD; Associate Vice President, Research Integrity Office, Oregon Health & Science University
ANITA EISENSTADT, JD; Assistant Vice President Research Integrity, Oregon State University
EMILY FIRMAN, MPH, MSW; Senior Program Officer, Arcora Foundation
DAVID FORSTER, JD, MA, CIP; Chief Compliance Officer, WIRB-Copernicus Group
DAVID HOLMGREN; IRB Manager, Research Integrity Office, Oregon Health & Science University
MIKE KLUZIK, MHS; Director, Office of Research Assurances at Washington State University
JENNIFER LANE, DVM; Director, Animal Resource Center and the Attending Veterinarian at Montana State University
KELLY LAWRENCE, JD; Manager and Regulatory Attorney, Seattle Children's
STEPHEN LIBBY, PhD; Research Associate Professor and IBC Chair, University of Washington
ROBERT H. MEALEY, DVM, PhD, DIPL ACVIM; Professor and Dean, Animal Health Research Center, Washington State University (Retired 2018)
LAURA PEARSON, BS; IACUC and IBC Administrator, CIDR (Retired 2018)
HEATHER PETERS; IRB Coordinator for the MultiCare Health System
AARON PUTZKE, PhD; Associate Professor of Biology, Whitworth University
TINA ROGERS; MBA, PhD; Vice President Preclinical Services, Altasciences/SNBL
JOHN ROLL, PhD; Professor and the Vice Dean for Research for the Elson S. Floyd College of Medicine as well as the Associate Vice President for Health Sciences Research for Washington State University
CHARLOTTE SHUPERT, PhD, CIP; IRB Specialists
KIM STOCKING, DVM, DACLAM; Director Office of Animal Welfare, University of Washington
RAJESH UTHAMANTHIL, DVM, PhD, DACLAM; Attending Veterinarian and Director of Comparative Medicine, Fred Hutchinson Cancer Research Center

ORGANIZATIONAL MEMBERS

Platinum Sustaining Members
Advarra
Quorum Review IRB
University of Washington
Western Institutional Review Board (WIRB)

Gold Sustaining Members
Fred Hutchinson Cancer Research Center
Oregon Health & Sciences University
VA Puget Sound
Washington State University

Silver Sustaining Members
Altasciences/SNBL USA
Benaroya Research Institute
Bloodworks Northwest
Swedish

Bronze Sustaining Members
Allen Institute
Arcora
Center for Infectious Disease Research
IDRI
InVision BioResources
Montana State University
Multicare Health System
Oregon State University
PATH
PhRMA
Portland State University
Seattle Children's Research Institute
Whitworth University
Washington Global Health Alliance
WBBA

Vendor Members
Charles River
Lucent Medical Systems
LabDiet/Purina
Linda Montgomery Investigations
Sage Bionetworks
The Jackson Laboratory
The Windward Company

NWABR Staff

VIRGINIA CARHART; Accountant
KEN GORDON; Executive Director
MANSI KAUSHIK, MS; Camp Manager
WENDI RUSSAC, MS; Education Programs
JENNIFER WROBLEWSKI, MPH; Public Engagement Manager

NWABR
Northwest Association for Biomedical Research

2633 Eastlake Ave E, Suite 302, Seattle, WA 98102
executivedirector@nwabr.org | www.nwabr.org

2018 BOARD OF DIRECTORS (Continued)

PRESTON VAN HOOSER; Review Scientist & Compliance Manager, Office of Animal Welfare, University of Washington

DONALD WANG, MPH; Director of Environmental Health and Safety at the Fred Hutchinson Cancer Research Center

BENJAMIN WILFOND, MD; Director, Treuman Katz Center for Pediatric Bioethics, Seattle Children's Research Institute, Professor, Division of Bioethics and Department of Pediatrics, University of Washington

GREGORY YANDL, MBA; Director of Research Finance for the Swedish Center for Research Innovation

Donors and Supporters

As an organization NWABR is incredibly fortunate to be supported by members, donors, attendees at events and sponsors. Sometimes certain individuals or organizations fall into several of these categories. The following is a combined list of all of NWABR's supporters over the last year. We have grouped multiple contributions – so the donor's true support for NWABR can be seen.

The Fundamental Building Blocks - The ACGT level – contributions up to \$1,000

Lizbeth Adams, Roger and Evelyn Ainsley-Iritani, Christopher Antony, Yuki Aoki, Arcorra Foundation, Nourredine Azouaou, David Babaian, Tyler Barcelli, Anna Marie Beckman, Cynthia Bennett, Thea Brabb, Max Brown, Andrew Burich, Richard Burrows, Bruce Busby, Jan Chalupny, Charles River Laboratories, Dominic Chiarelli, Shari Childers, Evelyn Clarke, Jessica Cohen, Jen and Peter Cole, Linda Coleman, Darrin Collins, Nora Coronado, Frank Eichmann, Anita Eisenstadt, Ellen Evans, Jean Feagin, Emily and Erik Firman, Laura Flores

Cantrell, Debra Garland, Steven and Janis Gilbert, Ireta Graube, Anthony Gray, Jaclyn Greenberg, Michelle Griener, Vance Hall, George Haluska, Karen Hansen, Sara Hegge, David Holmgren, Kirk Hoover, Rachel Iritani, Tad Iritani, Eiko Iritani, Katherine and Barry Iritani-Wong, Laury Istvan, Aarthi Iyert, Gary Jacobson, Cindy Jatul, Erica Jonlin, Carl Kaiser, Mansi and Bhudev Kaushik-Vats, Ed Kelly, Richard Ladner, Jennifer Lane, Dianne Lattemann, Kelly Lawrence, Dena Levine, Steve Libby, Laura Lockard, Bob Mealey, M J Mustari, Todd Myers, Holly Nguyen, Steve Niemi, Shannon Osborne, Bruce Park, Laura Pearson, Heather Peters, Tara Polek, Purina Mills Lab Diet, Aaron Putzke, Rainier Reyes, Shannon Reynolds, James Riddle, Gordon Roble, Tina Rogers, Lynn and Tim Rose, Stephen Rosenfeld, Sage Bionetworks, Lee Schoentrup, Meghan Scott, Conner Sessions, Julie Severson, Debbie Shiozaki, Charlotte Shupert, Hannah Sidney, Angela Silva, Greg and Vandana Slatter, Caroline Socha, Abra Soule, Laurel and David Stitzhal, Jane Sullivan, Kambria Tabor, Kari

Tetrault, Jeanne Ting Chowning, Raj Uthamanthil, Rod Utley, Preston Van Hooser, WA Secretary of State, Donald Wang, Traci Weber, Hope Wechkin, Reitha Weeks, Christine Wells, Janis Wignall, Benjamin Wilfond, Allison Witter Frey, Melia Wong, Mary Wong, Jen Wroblewski, Gregory Yandl, Nicolas Zea.

The Variability of Life –The Gene Level – contributors from \$1,000 and up to \$5,000

Allen Institute for Brain Science, Arcora Foundation, Benaroya Research Institute, Jane Biddle, Jeremy Block, Bloodworks Northwest, Bristol-Myers Squibb, Center for Infectious Disease, Katharyn Gerlich, Ken Gordon, Infectious Disease Research Institute, InVision BioResources, Jackson Laboratory, Kari Koszdin, Montana State University, Multicare Health - IRB, Oregon State University, Cindy Pekow, PhRMA, Portland State University, Paul and Alison Rockett-Frase, John Roll, Seattle Children's Research Institute, Kim Stocking, Sally

NWABR
Northwest Association for Biomedical Research

2633 Eastlake Ave E, Suite 302, Seattle, WA 98102
executivedirector@nwabr.org | www.nwabr.org

206-957-3337 |

Thompson-Iritani, Cheryl Weaver, Max and Marcia Witter.

The Pattern of Life – The Chromosome Level – contributors from \$5,000 and up to \$15,000

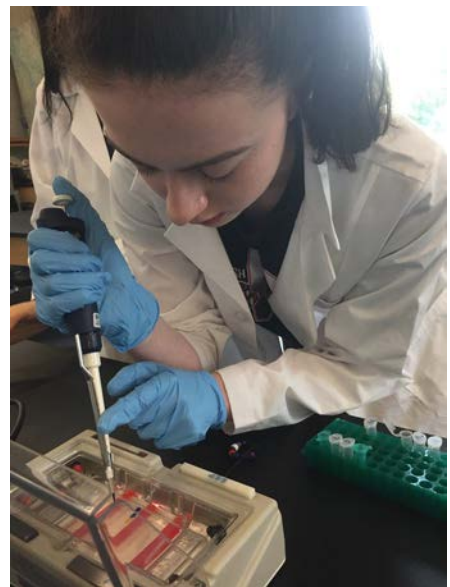
Advarra, Dean Witter Foundation, Fred Hutchinson Cancer Research Center, Cami Gearhart, Oregon Health & Science University, The NLA Group, Veterans Affairs Puget Sound Health Care, Washington State University.

The Full Expression of Life – The Genome Level – contributors from \$15,000 and up

The Knossos Foundation, Quorum Review, University of Washington, WIRB-Copernicus Group.

The following photographs are from students taking part in the 2018 CampBiomed Summer camp program. In 2018 students had a choice of four different one week long camps that focused on Cancer, CSI, Bioinformatics or Genetics.

Donations received during the year supported students to attend camp and also helped fund scholarships.



Gel Electrophoresis for CSI



Students start a heart dissection for CSI



Bacterial transformation for Genetics



More heart dissection!



Chromatography for Genetics

NWABR
Northwest Association for Biomedical Research

2633 Eastlake Ave E, Suite 302, Seattle, WA 98102

206-957-3337 | executivedirector@nwabr.org | www.nwabr.org