



NWABR

Northwest Association for Biomedical Research

2019 ANNUAL REPORT

NWABR

Northwest Association for Biomedical Research



Thirty years ago, the Presidents and CEOs of Pacific Northwest's most respected research facilities recognized that public trust in the integrity of research was essential to the future of medical discovery in our region. NWABR was born out of that commitment and stands today as the Northwest's leading voice for promoting the public's trust in biomedical research and its ethical conduct.



WHY ARE WE HERE?

Our mission is to promote the public's trust in biomedical research and its ethical conduct.

NWABR believes that a strong and vibrant biomedical research community is essential to the health and betterment of individuals and communities. The future of both community and individual health relies on a partnership between researchers, their human subjects, their non-human subjects, physicians and the public at large. NWABR exists to facilitate education and dialogue, to promote ethical practices in research, to provide opportunities for young people to explore biomedical careers and to provide venues where the public can gain insights into the research that will change all of our lives. As an association, *NWABR is a reflection of the values of our members and the life science research community in the Pacific Northwest.*

The core work of NWABR includes convening educational conferences for our members that focus on ethical research with, and care for, laboratory animals and human subjects; creating space for dialogue that advances understanding about life science research; facilitating educational opportunities for our community; and introducing students to bioethical frameworks, career pathways and biomedical research.

EXECUTIVE DIRECTOR'S REPORT

Thank you

An association like NWABR relies on the support, trust and goodwill of an incredibly wide range of stakeholders. I want to thank our member organizations that provide for the core costs of the association. This is our seed capital that allows us the space to plan conferences, respond to changing needs and issues in the biomedical research community and to be there to listen, support and engage when needed.

I also want to thank all of the members of our conference planning committees and partners. The provision of educational conferences for the biomedical research community is a fundamental part of the work of NWABR. In the 2018/19 year we held six annual and highly specialized conferences: IACUC, IRB, IBC, Communications, and Clinical Research Professionals Conference in both Seattle and Portland. Our planning committees help us to identify important topics, recruit amazing speakers and ensure that these conferences continue to meet the needs of the biomedical research communities.

Additionally, I need to thank all of our volunteers. This of course includes the planning committees, conference speakers and Board members. However, it also includes the people who stuff envelopes, intern at camps, volunteer at conferences, and those that help make food and prepare materials.

I need to particularly thank NWABR's Board members, who have worked with me and the full NWABR team to provide governance, leadership, support and counsel. They have also worked to make the whole "sausage making process", that we call good governance, both fun and productive.

I want to thank the researchers and all of the allied staff in the community who go to work every day with the focus of caring for both animal and human research subjects, while working to develop new treatments that improve all of our lives.

Lastly, I am humbled to acknowledge our donors and supporters who have been acknowledged in the very long list at the end of this report. These donors and supporters provide us with the resources that enable



NWABR's work. I am so totally and absolutely blown away by the fact that you trust us with your time, with your talent and with your treasure.

Lastly, I want to thank the NWABR staff. We are a small team but a lot of stuff gets done because we are so small and we all pitch in to make sure that the most important works gets done – and done well.

As NWABR continues to celebrate its 30th year of operations the core of our activities remains unchanged. These core services are the provision of education to members, their staff and to the wider community about the complexity and ethical protections associated with biomedical and social and behavioral research. Ultimately we see all of this hands-on work combining to meet NWABR's mission of promoting the public's trust in biomedical research, and its ethical conduct.

2019 IN REVIEW

Year in Review

NWABR has promoted the public's trust in biomedical research and its ethical conduct for 30 years. This past year, NWABR focused on embedding its renewed strategic plan with an ongoing focus of being nimble and meeting member's needs.

NWABR Programs

NWABR has remained committed to running high quality programs and providing needed member services. Our member services and education programs engage the life science research community including scientists, administrators, physicians, students, teachers, and the general public. Our renewed outlook and vision is based on our commitment to advance the ethical practice of research and the public's trust in this important field.

Member Services

NWABR is first and foremost a membership association. This includes working with our members to advance their understanding of ethical practices by facilitating networking and educational programs where professionals learn from peers and other experts. Promoting the highest possible standards of ethical conduct is at the core of NWABR's work. We place human and animal welfare at the center of medical and social and behavioral research.

In 2018/19, NWABR hosted six professional conferences: Institutional Review Board Conference (IRB), Institutional Biosafety Conference (IBC), Institutional Animal Care and Use Committees (IACUC) Conference, Communications Conference, and Clinical Research Professionals Conferences (CRP) in both Seattle and Portland. The major focus of each conference centered on bioethics, best practices, emerging trends, and regulatory compliance. Overall, 781 professionals attended these conferences and contributed to the ethics discussion. NWABR estimates that these conference attendees accrued in excess of 5,000 hours of CE credits towards their various professional recertifications.

Of particular note in 2018/19 were the following highlights:

- A partnership with PRIM&R to allow the NWABR IACUC and IBC conferences to be held alongside PRIM&R's own IACUC conference.
- A partnership with OHRP to host a Research Community Forum as part of an expanded two day IRB conference.
- A partnership with OHSU and the Pacific NW branch of ACRP to host a new CRP Conference in Portland.
- A new communications focused conference/workshop aimed at improving public support for biomedical research.

Community and Educational Programs

Over 150 students participated in STEM education programs through our sixth year of Camp BIOmed! In addition to the Camp program our public outreach was revitalized through the creation of a Research Ambassadors program. These programs provide opportunities for researchers and medical professionals to interact with the public and explain their research and views on ethics, while engaging the community in problem solving and dialogue. These programs address ethical issues currently impacting medical research and the broader community and importantly help to improve science literacy in our community.



Restructured Membership Options

This last year has been the fourth under restructured membership options that allow members to choose from a menu of membership levels and services. This new model is working well for NWABR and we are excited that several new organizations have joined or rejoined NWABR.

Finances

I am incredibly pleased to report that in the swirl of all this additional work and refocusing NWABR was able to produce another year with a modest surplus, of approximately \$40,000, which in turn bolsters our long term sustainability. Both the Board and I now believe that NWABR has been able to move to a sustainable operating model that addresses the needs of its members. Staffing is a major cost for NWABR and as Executive Director I want to thank all staff who have worked with me to find ways of doing more with less time during 2018/19.

NOTABLE HIGHLIGHTS

» **CONVENED SIX MAJOR REGIONAL CONFERENCES** for IACUC, IRB, IBC, Communications, and two CRP conferences drawing 781 participants to learn about best practices, regulatory compliance, and lessons learned.

» **FACILITATED NETWORKING AND COMMUNITY BUILDING** through NWABR's revised Research Ambassador program. Over 1,500 people were served through these programs.

» **EXPANDED NWABR'S CAMP BIOMED SUMMER CAMP WHERE ABOUT 150 CAMPERS** participated in NWABR's Cancer, Genetic Engineering, Medical Microbiology, Bioinformatics and CSI summer camp programs. Students built scientific knowledge and understanding of biomedical research and worked on presentation skills.

» **HONORED DR. STEVEN GILBERT AND THE ALLEN INSTITUTE** at NWABR's Speak Up For Research Gala. Speak Up For Research has become one of NWABR's unifying themes as we work with members to ensure that ethically based research continues to be recognized as an essential public priority.

» **ENGAGED PROFESSIONALS FROM THE LIFE SCIENCE INDUSTRY** who volunteered their support for NWABR's work. These volunteers included Board Members, Conference Planning Committee members, interns, other volunteers and notably the new group of Research Ambassadors.

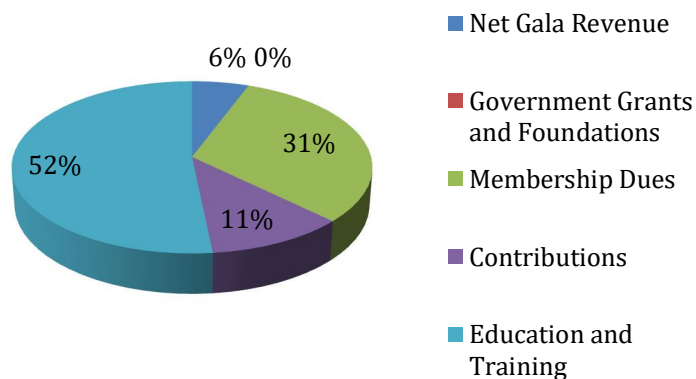


Students undertake PCR at Bioinformatics Camp

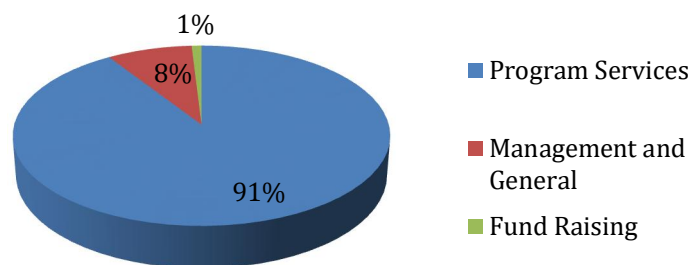
FINANCIAL RESULTS

Northwest Association for Biomedical Research		
Statements of Financial Position		
September 30, 2019 and 2018		
Assets	2019	2018
Current Assets	126,766	93,268
Property and Equipment	-	-
Total Assets	126,766	93,268
Liabilities and Net Assets		
Current Liabilities	33,371	40,579
Net Assets	93,395	52,689
Total Liabilities and Net Assets	126,766	93,268

Support and Revenue 2019



Expenses 2019



2019 EXECUTIVE COMMITTEE

SALLY THOMPSON-IRITANI, DVM, PhD; President; Director Washington National Primate Research Center, University of Washington
CAMI GEARHART, JD; Immediate Past President; Former CEO, Quorum Review
AARON PUTZKE, PhD; Vice President; Professor, Whitworth University
GREGORY YANDL, MBA; Director Research Finance, Swedish
BOB ENNES, BA; Treasurer; Chair, Finance Committee; Director, Health Sciences Academic Services & Facilities, University of Washington
SHANNON REYNOLDS, BA, CPIA, RLAT; Regulatory Compliance Specialist, Allen Institute
RICHARD BURROWS, Senior Veterinary Sciences Technologist,
KARI KOSZDIN, D.V.M, DIPL ACLAM, CPIA; Veterinary Medical Officer, VA Puget Sound

2019 BOARD OF DIRECTORS

CHRIS ANTONY, BA; Vice President, Operations, IDRI
DOUG BADGER, BA; Managing Partner, Quinn Thomas (representing PhRMA)
JESSICA COHEN, MHS; Director, Office of Research Ethics, PATH
LINDA COLEMAN, JD; Director, Human Research Protection Program, Yale University
JUAN COTTO, BSOCS; Director of Social Impact, Bloodworks NW
ROBANN CUNNINGHAM, BS; Chief Commercial Officer, ADVARRA
KARA DROLET, PhD; Associate Vice President, Research Integrity Office, Oregon Health & Science University
ANITA EISENSTADT, JD; Assistant Vice President Research Integrity, Oregon State University (retired March 2019)
EMILY FIRMAN, MPH, MSW; Senior Program Officer, Arcora Foundation
DAVID FORSTER, JD, MA, CIP; Chief Compliance Officer, WIRB-Copernicus Group
ROB GAEBEL, MSC; IACUC Coordinator, Oregon State University
DAVID HOLMGREN; IRB Manager, Research Integrity Office, Oregon Health & Science University
MIKE KLIZIK, MHS; Director, Office of Research Assurances at Washington State University
JENNIFER LANE, DVM; Director, Animal Resource Center and Attending Veterinarian at Montana State University
KELLY LAWRENCE, JD; Manager and Regulatory Attorney, Seattle Children's
STEPHEN LIBBY, PhD; Research Associate Professor and IBC Chair, University of Washington
SEAN MCGRAW, BA; Senior Director, Advocacy and Strategy, PhRMA (retired March 2019)
HEATHER PETERS; IRB Coordinator for the MultiCare Health System
GORDON ROBLE, DVM, DACLAM; Director Comparative Medicine, Fred Hutch
TINA ROGERS, MBA, PhD; Vice President Preclinical Services, Altasciences
JOHN ROLL, PhD; Professor, Vice Dean for Research for the Elson S. Floyd College of Medicine, Associate Vice President for Health Sciences Research, Washington State University
DEBBIE SHIOZAKI, BA, MPH; Senior Director, Scientific Support Services
CHARLOTTE SHUPERT, PhD, CIP; IRB Specialists

ORGANIZATIONAL MEMBERS

Platinum Sustaining Members

Advarra
Quorum Review IRB
University of Washington
Western Institutional Review Board (WIRB)

Gold and Gold Sustaining Members

Fred Hutchinson Cancer Research Center
Oregon Health & Sciences University
Washington State University

Silver and Silver Sustaining Members

Altasciences/SNBL USA
Benaroya Research Institute
Swedish

Bronze and Bronze Sustaining Members

Allen Institute
Arcora
IDRI
Kaiser Permanente
Montana State University
Multicare Health System
Oregon State University
PATH
PhRMA
Portland State University
Seattle Children's Research Institute
University of Oregon
VA Puget Sound
Whitworth University
Washington Global Health Alliance
WBBA

Vendor Members

LabDiet/Purina
Sage Bionetworks
The Jackson Laboratory

NWABR Staff

KEN GORDON; Executive Director
MANSI KAUSHIK, MS; Camp Manager
WENDI RUSSAC, MS; Accounting and Education Programs
JENNIFER WROBLEWSKI, MPH; Public Engagement Manager

NWABR
Northwest Association for Biomedical Research

2633 Eastlake Ave E, Suite 302, Seattle, WA 98102
executivedirector@nwabr.org | www.nwabr.org

206-957-3337 |

2019 BOARD OF DIRECTORS (Continued)

KIM STOCKING, DVM, DACLAM; Director Office of Animal Welfare, University of Washington

RAJESH UTHAMANTHIL, DVM, PhD, DACLAM; Attending Veterinarian, Director of Comparative Medicine, Fred Hutchinson Cancer Research Center

PRESTON VAN HOOSER; Review Scientist & Compliance Manager, Office of Animal Welfare, University of Washington

DONALD WANG, BSC, MPH; Director, Environmental Health and Safety, Fred Hutchinson Cancer Research Center

CHERYL WEAVER, BA, CCRC, CCRA; Immediate Past President; Administrative Director, Clinical Research Program, Benaroya Research Institute at Virginia Mason

Donors and Supporters

As an organization NWABR is incredibly fortunate to be supported by members, donors, event attendees, and sponsors.

Sometimes certain individuals or organizations fall into several of these categories. The following is a combined list of all of NWABR's supporters over the last year. We have grouped multiple contributions – so the donor's true support for NWABR can be seen.

The Fundamental Building Blocks – The ACGT level – contributions up to \$1,000

Christopher Antony, Sergio Armani, Anna Marie Beckman, Thea Brabb, Max Brown, Andrew Burich, Richard Burrows, Bruce Busby, John Cannon, Nancy Chambers, Jessica Cohen, Jen Cole, Linda Coleman, Rob Corcoran, Bill Dale, Ann Davis, Tim Dawe, Kara Drolet, Frank Eichmann, Bob Ennes, Erik Erikson, Luke Esposito, Jean Feagin, Emily and Erik Firman, Laura Flores Cantrell, David Forster, Meg Fox, Rob Gaebel, John Gebe, Gina Grappone, Anthony Gray, Lauren Hackett, George Haluska, Jennifer

Hansberry, Karen Hansen, David Holmgren, Renee Holt, Karen Hunt, Sally James, Jennifer Jay, Erica Jonlin, Ed Kelly, Scott Kelly, Anonymous, Kar Mun King, Michael Kluzik, Savitha Krammer, Paul Kwitek, Jennifer Lane, Maja Larson, Kelly Lawrence, Dena Levine, Steve Libby, Allison Melchert, Alison Milbrandt, Lisa Milkowski, Gabe Murphy, Donielle O'Connor, Jenn Pang, Heather Peters, Tara Polek, Purina Mills Lab Diet, Aaron Putzke, Shannon Reynolds, Gordon Roble, Tina Rogers, Lynn and Tim Rose, Sage Bionetworks, Kalyani Sattiraju, Jim Scanlan, Lee Schoentrup, Christopher Shainin, Shannon Shelah Roth, Debbie Shiozaki, Charlotte Shupert, Sarah Siegel, Angela Silva, Greg and Vandana Slatter, Caroline Socha, Bruder Stapleton, Kim Stocking, Jane Sullivan, Andrea Swanson, Raj Uthamanthil, Rudolf Vincena, WA Secretary of State, Hope Wechkin, Reitha Weeks, Chris Weir, Christine Wells, John Wilbanks, Benjamin Wilfond, Max Witter, Ann Wroblewski, Bob and Cindy

Wroblewski, Jen Wroblewski, Gregory Yandl

The Variability of Life –The Gene Level – contributors from \$1,000 and up to \$5,000

Allen Institute for Brain Science, Arcora Foundation, Benaroya Research Institute, Bloodworks Northwest, Larry Corey, Robann Cunningham, Katharyn Gerlich, Steven and Janis Gilbert, Ken Gordon, Infectious Disease Research Institute, Kaiser Permanente, Kari Koszdin, Montana State University, Multicare Health – IRB, Oregon State University, Pekow Family Foundation, Cindy Pekow, Portland State University, John Roll, Sally Thompson-Iritani, Seattle Children's Research Institute, Steve and Tricia Trainer, University of Oregon, Donald Wang, Cheryl Weaver.

The Pattern of Life – The Chromosome Level – contributors from \$5,000 and up to \$15,000

Advarra, Cami Gearhart, Fred Hutchinson Cancer Research Center,

NWABR
Northwest Association for Biomedical Research

2633 Eastlake Ave E, Suite 302, Seattle, WA 98102
executivedirector@nwabr.org | www.nwabr.org

206-957-3337 |

Oregon Health & Science University, The NLA Group, , Washington Global Health Alliance, Washington State University.

The Full Expression of Life – The Genome Level – contributors from \$15,000 and up

PhRMA, The Dean Witter Foundation, Quorum Review IRB, University of Washington, WIRB-Copernicus Group.

Donations received during the year supported students to attend camp and also helped fund scholarships.



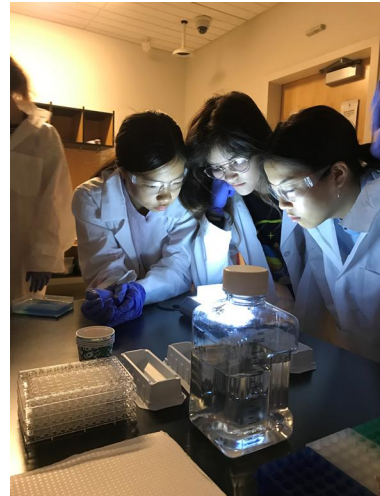
Students start a heart dissection



Bacterial transformation for Genetics

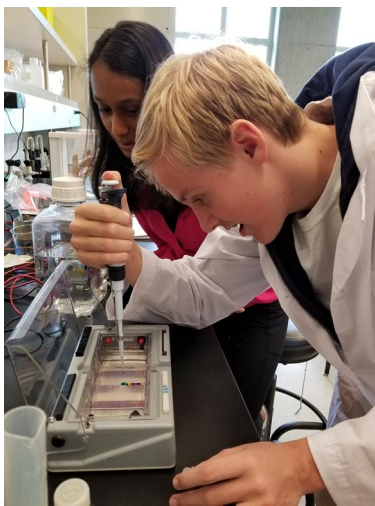


Brain dissection!



pGLO Bacteria for Genetics

The following photographs are from students taking part in the 2019 Camp Biomed Summer camp program. In 2019 students had a choice of five different one week long camps that focused on Cancer, CSI, Bioinformatics, Genetics, and Medical Microbiology.



Gel Electrophoresis

NWABR
Northwest Association for Biomedical Research

2633 Eastlake Ave E, Suite 302, Seattle, WA 98102
executivedirector@nwabr.org | www.nwabr.org

206-957-3337 |



206-957-3337 | 2633 Eastlake Ave E, Suite 302, Seattle, WA 98102
executivedirector@nwabr.org | www.nwabr.org