



WORKSHOPS ACCESSIBLE DIALOGUE EDUCATION
STUDENTS CONNECTING FACILITATION
COMMUNICATION RESPONSIVE PARTNERSHIPS
TEACHERS CONFERENCES COMMUNITY NETWORKING
WORKSHOPS ACCESSIBLE DIALOGUE
EDUCATION STUDENTS CONNECTING FACILITATION
COMMUNICATION RESPONSIVE PARTNER-
TEACHERS CONFERENCES COMMUNITY
NETWORKING WORKSHOPS ACCESSIBLE DIA-

NWABR

Northwest Association for Biomedical Research

2020 ANNUAL REPORT

S COMMUNITY NETWORKING WORKSHOPS
ACCESSIBLE DIALOGUE EDUCATION STUDENTS
CONNECTING FACILITATION COMMUNICATION RE-
NSIVE PARTNERSHIPS TEACHERS CONFER-
ES COMMUNITY NETWORKING WORKSHOPS
ACCESSIBLE DIALOGUE EDUCATION STUDENTS
CONNECTING FACILITATION COMMUNICATION
RESPONSIVE PARTNERSHIPS TEACHERS CON-
FERENCES COMMUNITY NETWORKING WORKSHOPS

Thirty one years ago, the Presidents and CEOs of Pacific Northwest's most respected research facilities recognized that public trust in the integrity of research was essential to the future of medical discovery in our region. NWABR was born out of that commitment and stands today as the Northwest's leading voice for promoting the public's trust in biomedical research, and its ethical conduct.



WHY ARE WE HERE?

Our mission is to promote the public's trust in biomedical research, and its ethical conduct.

NWABR believes that a strong and vibrant biomedical research community is essential to the health and betterment of individuals and communities. The future of both community and individual health relies on a partnership between researchers, their human subjects, their non-human subjects, physicians and the public at large. NWABR exists to facilitate education and dialogue, to promote ethical practices in research, to provide opportunities for young people to explore biomedical careers and to provide venues where the public can gain insights into the research that will change all of our lives. As an association, *NWABR reflects the values of our members and the life science research community in the Northwest.*

The core work of NWABR includes convening educational conferences for our members that focus on ethical research with, and care for, laboratory animals and human subjects; creating space for dialogue that advances understanding about life science research; facilitating educational opportunities for our community; and introducing students to bioethical frameworks, career pathways and biomedical research.

EXECUTIVE DIRECTOR'S REPORT

Thank you

2020 is a year for the record books. The Coronavirus pandemic impacted both what we do and how we do it. The pandemic brought both unprecedented focus on biomedical research and also extreme pressure on all of our member institutions as their business models were upended.

I have said this before – and it is worth repeating – I have never been so proud of biomedical research. By some estimates something like 30 percent of the research effort in the United States was pivoted to a focus on the pandemic. This pivot touched all aspects of biomedical research, including the operations of IBC, IACUC and IRB Committees; the delivery and expansion of Clinical Research programs; and a new public focus to all of this work.

The work of biomedical research is the key to the world returning to normal. Biomedical research is driving improved understanding, detection, and treatment for both the Coronavirus and COVID-19. The record breaking speed of vaccine development and the roll out of these immunization programs offers hope for the future. Public trust in biomedical research and science is also on the rise as institutions have opened up their systems to let the public see how all of this work is being undertaken.

I have to say thank you, thank you, thank you to everyone involved. 2020 has been a tough year for NWABR, and I am very clear that we came out of the year stronger and more committed to our mission of building the public's trust in biomedical research, and its ethical conduct.

An association like NWABR relies on the support, trust and goodwill of an incredibly wide range of stakeholders. I want to thank our member organizations that provide for the core costs of the association. This is our seed capital that allows us the space to plan conferences, respond to changing needs and issues in the biomedical research community and to be there to listen, support and engage when needed.



I also want to thank all of the members of our conference planning committees, conference partners and all of the speakers that literally breathe life into these programs. The provision of educational conferences for the biomedical research community is a fundamental part of the work of NWABR. In the 2019/20 year we held six annual and highly specialized conferences: IACUC, IRB, IBC, Communications, and Clinical Research Professionals Conference in both Seattle and Portland. Our planning committees help us to identify important topics, recruit amazing speakers and ensure that these conferences continue to meet the needs of the biomedical research communities.

Additionally, I need to particularly thank NWABR's Board members, who have worked with me and the full NWABR team to provide governance, leadership, support and counsel. They have also worked to make the whole "sausage making process," that we call good governance, both fun and productive.

I also want to thank the researchers and all of the allied staff in the community who go to work every day with the focus of caring for both animal and human research subjects, while working to develop new treatments that improve all of our lives.

I am humbled to acknowledge our donors and supporters who have been recognized in the very long list at the end of this report. These donors and supporters provide us with the resources that enable NWABR's work. I am so totally and absolutely blown away by the fact that you trust us with your time, with your talent and with your treasure.

Lastly, I want to thank the NWABR staff. We are a small team but a lot of stuff gets done because we are so small and we all pitch in to make sure that the most important works gets done – and done well.

2020 IN REVIEW

Year in Review

NWABR has promoted the public's trust in biomedical research and its ethical conduct for 31 years. This past year, NWABR focused on embedding its renewed strategic plan with an ongoing focus of being nimble and meeting member's needs. This focus on being nimble was extremely important as all of our programs, from about March 2020, were moved into virtual platforms.

NWABR Programs

NWABR has remained committed to running high quality programs and providing needed member services. Our member services and education programs engage the life science research community including scientists, administrators, physicians, students, teachers, and the general public. Our renewed outlook and vision is based on our commitment to advance the ethical practice of research and the public's trust in this important field.

Member Services

NWABR is first and foremost a membership association. This includes working with our members to advance their understanding of ethical practices by facilitating networking and educational programs where professionals learn from peers and other experts. Promoting the highest possible standards of ethical conduct is at the core of NWABR's work. We place human and animal welfare at the center of medical and social and behavioral research.

In 2019/20, NWABR hosted six professional conferences: Institutional Review Board Conference (IRB), Institutional Biosafety Conference (IBC), Institutional Animal Care and Use Committees (IACUC) Conference, Communications Conference, and Clinical Research Professionals Conferences (CRP) in both Seattle and Portland. NWABR also ran a series of three CRP focused workshops for Swedish Neuroscience. The major focus of each conference centered on bioethics, best practices, emerging trends, and regulatory compliance. Overall, 1,031 professionals attended these conferences and contributed to the ethics discussion. NWABR estimates that these conference attendees accrued in excess of 7,000 hours of CE credits towards their various professional re-certifications.



As previously noted, the Coronavirus pandemic changed the way conferences were delivered during the year. Starting with the workshops for Swedish Neuroscience, in March 2020, all of our conferences were transitioned to virtual delivery. We want to especially thank the speakers and attendees that have pivoted with us and actually driven a 30% increase in attendees over the year.

Community and Educational Programs

Over 220 students participated in STEM education programs through our seventh year of Camp BIOMed! This year these camps were held virtually and these camps will be repeated virtually during 2021. In addition to the Camp program our public outreach was revitalized through the creation of a Research Ambassadors program. These programs provide opportunities for researchers and medical professionals to interact with the students and the public and explain their research and views on ethics, while engaging the community in problem solving and dialogue. These programs address ethical issues currently impacting medical research and the broader community and importantly help to improve science literacy in our community.

Finances

I am incredibly pleased to report that in the swirl of all this additional work and refocusing NWABR was able to produce another year where we essentially broke even. The Financial Statements report a loss of \$15,492 before the application of the PPP loan which when recognized will produce a modest surplus. The major driver of this improved sustainability was the marked drop in the prices charged for NWABR's virtual conferences. Essentially, for NWABR, there were cost savings associated with these virtual events and we committed as an organization to pass these savings directly to our members. Both the Board and I now believe that NWABR has been able to move to a sustainable operating model that addresses the needs of its members. Staffing is a major cost for NWABR and as Executive Director I want to thank all staff who have worked with me to find ways of doing more with less time during 2019/20.

NOTABLE HIGHLIGHTS

» **CONVENED SIX MAJOR REGIONAL CONFERENCES** for IACUC, IRB, IBC, Communications, and two CRP conferences drawing 1,031 participants to learn about best practices, regulatory compliance, and lessons learned.

» **FACILITATED NETWORKING AND COMMUNITY BUILDING** through NWABR's revised Research Ambassador program. 81 people attended the communications workshop held in September 2020, and these attendees are the core of the Research Ambassadors program.

» **EXPANDED NWABR'S CAMP BIOMED SUMMER CAMP WITH SHIFT TO VIRTUAL** allowing 225 students to participate for free in NWABR's Virtual summer camp programs. Students built scientific knowledge and understanding of biomedical research and worked on presentation skills.

» **HONORED DRS. CARLA GREENBAUM AND BILL HAGOPIAN** at NWABR's Speak Up For Research Gala. Speak Up For Research has become one of NWABR's unifying themes as we work with members to ensure that ethically based research continues to be recognized as an essential public priority.

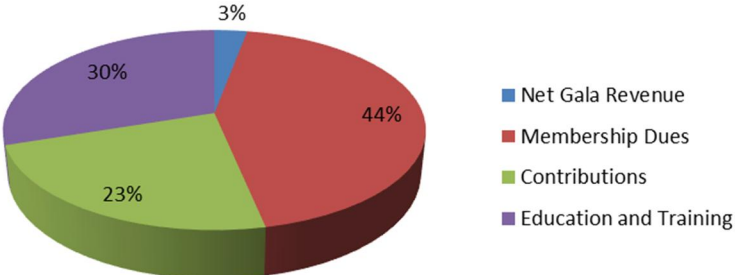
» **ENGAGED PROFESSIONALS FROM THE LIFE SCIENCE INDUSTRY** who volunteered their support for NWABR's work. These volunteers included Board Members, Conference Planning Committee members, interns, other volunteers and notably the new group of Research Ambassadors.



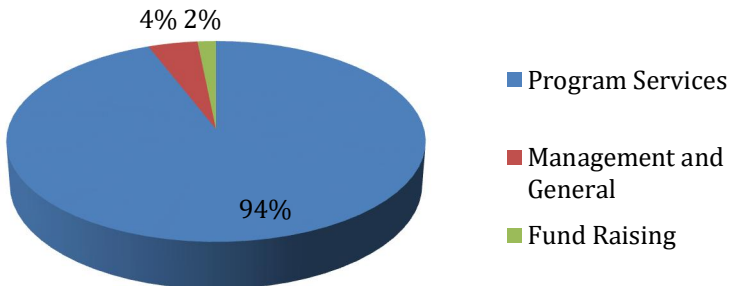
FINANCIAL RESULTS

Northwest Association for Biomedical Research		
Statements of Financial Position		
September 30, 2020 and 2019		
Assets	2020	2019
Current Assets	160,827	126,766
Property and Equipment	-	-
Total Assets	160,827	126,766
Liabilities and Net Assets	2020	2019
Current Liabilities	82,924	33,371
Net Assets	77,903	93,395
Total Liabilities and Net Assets	160,827	126,766

Support and Revenue 2020



Expenses 2020



2020 EXECUTIVE COMMITTEE

SALLY THOMPSON-IRITANI, DVM, PhD; President; Director Washington National Primate Research Center, University of Washington
CAMI GEARHART, JD; Immediate Past President; Former CEO, Quorum Review
AARON PUTZKE, PhD; Vice President; Professor, Whitworth University
GREGORY YANDL, MBA; Director Research Finance, Swedish
BOB ENNES, BA; Treasurer; Chair, Finance Committee; Director, Health Sciences Academic Services & Facilities, University of Washington
SHANNON REYNOLDS, BA, CPIA, RLAT; Regulatory Compliance Specialist, Allen Institute
RICHARD BURROWS, Senior Veterinary Sciences Technologist,
KIM STOCKING, DVM, DACLAM; Director Office of Animal Welfare, University of Washington

2020 BOARD OF DIRECTORS

DOUG BADGER, BA; Managing Partner, Quinn Thomas (representing PhRMA)
BRUCE BUSBY, Director of Environmental Health and Safety at the Fred Hutchinson Cancer Research Center
JESSICA COHEN, MHS; Director, Office of Research Ethics, PATH
LINDA COLEMAN, JD; Director, Human Research Protection Program, Yale University
KARA DROLET, PhD; Associate Vice President, Research Integrity Office, Oregon Health & Science University
EMILY FIRMAN, MPH, MSW; Senior Program Officer, Arcora Foundation
DAVID FORSTER, JD, MA, CIP; Chief Compliance Officer, WIRB-Copernicus Group
ROB GAEBEL, MSC; IACUC Coordinator, Oregon State University
JENNIFER HANSBERRY, RN, BSN, Administrative Director of the Swedish Center for Research and Innovation
DAVID HOLMGREN; IRB Manager, Research Integrity Office, Oregon Health & Science University
MIKE KLUZIK, MHS; Director, Office of Research Assurances at Washington State University
KARI KOSZDIN, D.V.M, DIPL ACLAM, CPIA; Veterinary Medical Officer, VA Puget Sound
KELLY LAWRENCE, JD; Manager and Regulatory Attorney, Seattle Children's
STEPHEN LIBBY, PhD; Research Associate Professor and IBC Chair, University of Washington
MONTE MATTHEWS, BA, CPIA, Director of Animal Welfare at the University of Oregon.
TANYA MATTHEWS, Administrator, IRB & Research Review at Kaiser Permanente (Washington Health Research Institute)
HEATHER PETERS; IRB Coordinator for the MultiCare Health System
JAMES RIDDLE, MCSE, CNE, CIP, CRQM, Vice President Institutional Services for Advarra
GORDON ROBLE, DVM, DACLAM; Director Comparative Medicine, Fred Hutch
TINA ROGERS; MBA, PhD; Vice President Preclinical Services, Altasciences
JOHN ROLL, PhD; Professor, Vice Dean for Research for the Elson S. Floyd College of Medicine, Associate Vice President for Health Sciences Research, Washington State University

ORGANIZATIONAL MEMBERS

Platinum Sustaining Members

Advarra
University of Washington
Western Institutional Review Board (WIRB)

Gold and Gold Sustaining Members

Fred Hutchinson Cancer Research Center
Oregon Health & Sciences University
Washington State University

Silver and Silver Sustaining Members

Altasciences
Benaroya Research Institute
Swedish

Bronze and Bronze Sustaining Members

Allen Institute
Arcora
Andy Hill Care Fund
Kaiser Permanente
Multicare Health System
PATH
PhRMA
Portland State University
Seagen
Seattle Children's Research Institute
University of Oregon
VA Puget Sound
Whitworth University
Washington Global Health Alliance
WBBA

Vendor Members

LabDiet/Purina
Sage Bionetworks
The Jackson Laboratory

NWABR Staff

KEN GORDON; Executive Director
MANSI KAUSHIK, MS; Camp Manager
WENDI RUSSAC, MS; Accounting and Education Programs
JENNIFER WROBLEWSKI, MPH; Public Engagement Manager

NWABR
Northwest Association for Biomedical Research

2633 Eastlake Ave E, Suite 302, Seattle, WA 98102
executivedirector@nwabr.org | www.nwabr.org

206-957-3337 |

2020 BOARD OF DIRECTORS (Continued)

DEBBIE SHIOZAKI, BA, MPH; Senior Director, Scientific Support Services

CHARLOTTE SHUPERT, PhD, CIP; IRB Specialists

RAJESH UTHAMANTHIL, DVM, PhD, DAACLAM; Attending Veterinarian, Director of Comparative Medicine, Fred Hutchinson Cancer Research Center

PRESTON VAN HOOSER; Review Scientist & Compliance Manager, Office of Animal Welfare, University of Washington

CHERYL WEAVER, BA, CCRC, CCRA; Immediate Past President; Administrative Director, Clinical Research Program, Benaroya Research Institute at Virginia Mason

Donors and Supporters

As an organization NWABR is incredibly fortunate to be supported by members, donors, event attendees, and sponsors. Sometimes certain individuals or organizations fall into several of these categories. The following is a combined list of all of NWABR's supporters over the last year. We have grouped multiple contributions – so the donor's true support for NWABR can be seen.

The Fundamental Building Blocks - The ACGT level – contributions up to \$1,000

Adams, Lizbeth
Alberg, Mary
Alhadeff, Naomi
Andrich, Kathy
Baquero, Karalee
Bendixen, Becky
Brabb, Thea
Brandon, John and Catherine
Braunger, Christopher W.
Burich, Andrew
Burrows, Richard
Busby, Bruce
Cannon, John
Carte, Amber
Cashman, Judy

Cheng, Robert
Chitty, Andy
Christianity, Julie
Clifford, Shalonda
Cole, Jen & Peter
Coleman, Linda
Colvin, Sue
Cooper, Karen
Davis, Caroline
Dorer, Marion
Dowling, Susan
Drolet, Kara
Egge, Chris
Eichen, Terri
Ennes, Bob
Esposito, Luke
Evans, Wayne
FabreSuver, Christine
Feagin, Jean
Firman, Emily and Erik
Fox, Meg
Gaebel, Rob
Gebe, John
Goldman, Ran
Gordon, Diana
Grant, Richard
Gray, Anthony
Hall, Vance
Haluska, George
Haskell, Scott
Heffernan, Kelly
Higley, Amanda

Holmgren, David
Hudson, Margaret
Istvan, Laurence
Jarrell, Vickie
Jonlin, Erica
Kelly, Edward J.
Kennedy, Bruce
Kensler, Tom
King, Kar Mun
LabDiet
Lau, Yvonne
Levine, Dena
Lewis, Megan
Libby, Steve
Lovejoy, Juliet
Mann, Lindsey
Margolies, Devin
Matthews, Tanya
McArdle, Paula
McCulloch-Olson, Marli
Melbye, Terry
Miller, Nola
Morrisroe, Kelly
Murphy, Denise
Nguyen, Holly
Pekow, Cindy
Pike, Lorraine
Polek, Tara
Putzke, Aaron
Resare, Charlie
Reynolds, Shannon

NWABR
Northwest Association for Biomedical Research

2633 Eastlake Ave E, Suite 302, Seattle, WA 98102
executivedirector@nwabr.org | www.nwabr.org

206-957-3337 |

Riddle, James
Rogers, Tina
Roll, John
Rudensey, Lyle
Sage Bionetworks
Scott, Meghan
Shelah Roth, Shannon
Shiozaki, Debbie
Shupert, Charlotte
Slatter, Greg and Vandana
Slayton, Julie
Sliker, Sydnie
Smyer, Shehalee
Socha, David
Stitzhal, Laurel and David
Sullivan, Jane
Swanson, Andrea
The Jackson Laboratory
Thurman, Sydney
Tobis, Fred
Tobis, Isaac
Tobis, Jacob
Tully, Megan
Uthamanthil, Raj
Van Hooser, J. Preston
Vecchione, Maurizio
Weber, Traci
Wechkin, Hope
Weeks, Reitha
Wells, Christine
Westby, Christian
Witter, Max
Woodford, Nina
Wroblewski, Jen

**The Variability of Life –The
Gene Level – contributors from
\$1,000 and up to \$5,000**

Andy Hill CARE Fund
Arcora
Benaroya Research Institute
Gordon, Ken
Hansberry, Jennifer
Kaiser Permanente
Koszdin, Kari
MultiCare Health Systems
PATH
Pekow, Cindy
Portland State University

Rose, Lynn and Tim
Seagen
Seattle Children's Research
Institute
Stocking, Kim
Thompson-Iritani, Sally
Trainer, Steve and Tricia
University of Oregon
VA Puget Sound
Weaver, Cheryl
Wilson, David
Wroblewski, Bob and Cindy

**The Pattern of Life – The
Chromosome Level –
contributors from \$5,000 and
up to \$15,000**

Altasciences
Gearhart, Cami
PhRMA
Providence
Swedish
Seattle Foundation
The Dean Witter Foundation
Washington Global Health
Alliance
Weber, Edward L.

**The Full Expression of Life –
The Genome Level –
contributors from \$15,000 and
up**

Advarra
University of Washington
Western Institutional Review
Board

NWABR
Northwest Association for Biomedical Research

2633 Eastlake Ave E, Suite 302, Seattle, WA 98102
executivedirector@nwabr.org | www.nwabr.org

206-957-3337 |