



WORKSHOPS ACCESSIBLE DIALOGUE EDUCATION
STUDENTS CONNECTING FACILITATION
COMMUNICATION RESPONSIVE PARTNERSHIPS
TEACHERS CONFERENCES COMMUNITY NETWORKING
WORKSHOPS ACCESSIBLE DIALOGUE
EDUCATION STUDENTS CONNECTING FACILITATION
COMMUNICATION RESPONSIVE PARTNER-
TEACHERS CONFERENCES COMMUNITY
NETWORKING WORKSHOPS ACCESSIBLE DIA-

NWABR

Northwest Association for Biomedical Research

2021 ANNUAL REPORT

S COMMUNITY NETWORKING WORKSHOPS
ACCESSIBLE DIALOGUE EDUCATION STUDENTS
CONNECTING FACILITATION COMMUNICATION RE-
NSIVE PARTNERSHIPS TEACHERS CONFER-
ES COMMUNITY NETWORKING WORKSHOPS
ACCESSIBLE DIALOGUE EDUCATION STUDENTS
CONNECTING FACILITATION COMMUNICATION
RESPONSIVE PARTNERSHIPS TEACHERS CON-
FERENCES COMMUNITY NETWORKING WORKSHOPS

Thirty-two years ago, the Presidents and CEOs of the Pacific Northwest's most respected research facilities recognized that public trust in the integrity of research was essential to the future of medical discovery in our region. NWABR was born out of that commitment and stands today as the Northwest's leading voice for promoting the public's trust in biomedical research, and its ethical conduct.



(at right: Sally Thompson-Iritani, NWABR Board President)

WHY ARE WE HERE?

Our mission is to promote the public's trust in biomedical research, and its ethical conduct.

NWABR believes that a strong and vibrant biomedical research community is essential to the health and betterment of individuals and communities. The future of both community and individual health relies on a partnership between researchers, their human subjects, their non-human subjects, physicians and the public at large. NWABR exists to bring these groups together to facilitate education and dialogue, to promote ethical practices in research, to provide opportunities for young people to explore biomedical careers and to provide venues where the public can gain insights into the research that will change all of our lives. As an association, *NWABR reflects the values of our members and the life science research community in the Northwest.*

The core work of NWABR includes convening educational conferences for our members that focus on ethical research, biosafety and security. We focus on work with, and care for, laboratory animals and human subjects; creating space for dialogue that advances understanding about life science research; facilitating educational opportunities for our community; and introducing students to bioethical frameworks, career pathways and biomedical research.

EXECUTIVE DIRECTOR'S REPORT

Thank you

2021 has been a year. We have seen the highs and lows of this pandemic. We have seen hospitalization and death rates that have previously been unknown in our lifetimes; the creation, distribution, and politicization of vaccines; the reopening of our society; and, the emergence of Coronavirus variants. It is difficult to not feel as if we are in a global version of the 1993 film, *Groundhog Day*.

I have said this before – and it is worth repeating – I have never been so proud of biomedical research. By some estimates something like 30 percent of the research effort in the United States was pivoted to focus on the pandemic. This pivot touched all aspects of biomedical research, including the operations of IBC, IACUC and IRB committees, the delivery and expansion of clinical research programs and a new public focus to all of this work.

The work of biomedical research remains the key to the world returning to normal. Biomedical research is driving improved understanding, detection, and treatment for both the Coronavirus and COVID-19. The record breaking speed of vaccine development and the roll out of these immunization programs offers hope for the future. Public trust in biomedical research and science is also on the rise as institutions have opened up their systems to let the public see how all of this work is being undertaken. And at the same time we have experienced the work of anti-research activists who seem intent on destroying all of these hard one gains.

I have to say thank you, thank you, thank you to everyone involved in all of this incredibly positive work. 2021 has been a tough year for NWABR, and I am very clear that we came out of the year stronger and more committed to our mission of building the public's trust in biomedical research, and its ethical conduct.



An association like NWABR relies on the support, trust and goodwill of an incredibly wide range of stakeholders. I want to thank our member organizations that provide for the core costs of the association. This is our seed capital that allows us the space to plan conferences, respond to changing needs and issues in the biomedical research community and to be there to listen, support and engage when needed.

I also want to thank all of the members of our conference planning committees, conference partners and all of the speakers that literally breathe life into these programs. The provision of educational conferences for the biomedical research community is a fundamental part of the work of NWABR. In the 2020/21 year we held six annual and highly specialized conferences: IACUC, IRB, IBC, Communications, and Clinical Research Professionals Conferences in both Seattle and Portland. Our planning committees help us to identify important topics, recruit amazing speakers and ensure that these conferences continue to meet the needs of the biomedical research community. All of these programs in 2021 were delivered virtually. I have to acknowledge both the speakers and audiences that have so graciously shifted to accommodate this less than ideal, and absolutely necessary, way in which conferences are being managed as we do everything that we can to keep people safe.

Additionally, I need to particularly thank NWABR's Board members, who have worked with me and the full NWABR team to provide governance, leadership, support and counsel. They have also worked to make the whole "sausage making process," that we call good governance, both fun and productive.

I also want to thank the researchers and all of the allied staff in the community who go to work every day with the focus of caring for both animal and human research subjects, while working to develop new treatments that improve all of our lives.

I am humbled to acknowledge our donors and supporters who have been recognized in the very long list at the end of this report. You provide us with the resources that enable NWABR's work. I am so totally and absolutely blown away by the fact that you trust us with your time, with your talent and with your treasure.

Lastly, I want to thank the NWABR staff. We are a small team but a lot of stuff gets done because we are so small and we all pitch in to make sure that the most important works gets done – and done well.

2021 IN REVIEW

Year in Review

NWABR has promoted the public's trust in biomedical research and its ethical conduct for 32 years. This past year, NWABR focused on embedding its renewed strategic plan with an ongoing focus of being nimble and meeting member's needs. This focus on being nimble was extremely important as all of our programs were delivered virtually during 2021.

NWABR Programs

NWABR has remained committed to running high quality programs and providing needed member services. Our member services and education programs engage the life science research community including scientists, administrators, physicians, students, teachers, and the general public. Our renewed outlook and vision is based on our commitment to advance the ethical practice of research and the public's trust in this important field.

Member Services

NWABR is first and foremost a membership association. This includes working with our members to advance their understanding of ethical practices by facilitating networking and educational programs where professionals learn from peers and other experts. Promoting the highest possible standards of ethical conduct is at the core of NWABR's work. We place human and animal welfare at the center of medical and social and behavioral research.

In 2020/21, NWABR hosted six professional conferences: Institutional Review Board Conference (IRB), Institutional Biosafety Conference (IBC), Institutional Animal Care and Use Committees (IACUC) Conference, Communications Conference, and Clinical Research Professionals Conferences (CRP) in both Seattle and Portland. The major focus of each conference centered on bioethics, best practices, emerging trends, and regulatory compliance. Overall, 985 professionals



attended these conferences and contributed to the ethics discussion. NWABR estimates that these conference attendees accrued approximately 7,000 hours of CE credits towards their various professional re- certifications.

Community and Educational Programs

Over 320 students participated in STEM education programs through our eight year of Camp BIOMed! This year these camps were held virtually. We are planning for the camps to be back live in 2022, with locations in Seattle, Bellevue, and Spokane. In addition to the Camp program our public outreach was supported through the ongoing work of our Research Ambassadors program. These programs provide opportunities for researchers and medical professionals to interact with the students and the public and explain their research and views on ethics, while engaging the community in problem solving and dialogue. These programs address ethical issues currently impacting medical research and the broader community and importantly help to improve science literacy in our community.

Finances

I am incredibly pleased to report that in the swirl of all this additional work and refocusing NWABR was able to produce another year where we essentially broke even. The Financial Statements report a surplus of \$43,265. The majority of this surplus derives from the conversion of our 2020 PPP loan to a grant, so with this factored in our operating surplus was a more modest \$4,777. The major driver of this improved sustainability was the marked drop in the prices charged for NWABR's virtual conferences. Essentially, for NWABR, there were cost savings associated with these virtual events and we committed as an organization to pass these savings directly to our members. Both the Board and I now believe that NWABR has been able to move to a sustainable operating model that addresses the needs of its members. Staffing is a major cost for NWABR and as Executive Director I want to thank all staff who have worked with me to find ways of doing more with less time during 2020/21.

NOTABLE HIGHLIGHTS

» **CONVENED SIX MAJOR REGIONAL CONFERENCES** for IACUC, IRB, IBC, Communications, and two CRP conferences drawing 985 participants to learn about best practices, regulatory compliance, and lessons learned.

» **FACILITATED NETWORKING AND COMMUNITY BUILDING** through NWABR's revised Research Ambassador program. 26 people attended the communications workshop held in October 2021, and these attendees are the core of the Research Ambassadors program.

» **EXPANDED NWABR'S CAMP BIOMED SUMMER CAMP WITH SHIFT TO VIRTUAL** allowing 320 students to participate in NWABR's Virtual summer camp programs. Students built scientific knowledge and understanding of biomedical research and worked on presentation skills.

» **HONORED THE ENTIRE NW BIOMEDICAL RESEARCH COMMUNITY** at NWABR's #ThanksResearch Gala. #ThanksResearch has become one of NWABR's unifying themes as we work with members to ensure that ethically based research continues to be recognized as an essential public priority.

» **ENGAGED PROFESSIONALS FROM THE LIFE SCIENCE INDUSTRY** who volunteered their support for NWABR's work. These volunteers included Board Members, Conference Planning Committee members, interns, other volunteers and notably the new group of Research Ambassadors.

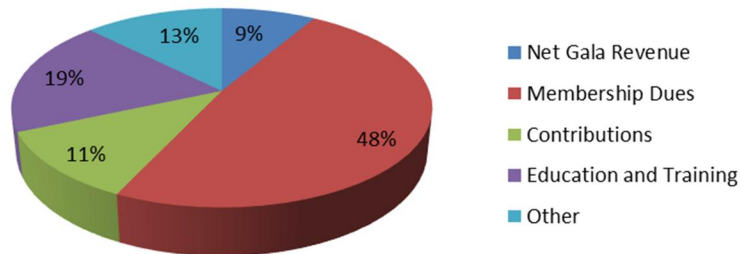
» **#THANKSRESEARCH** with the help of Quinn Thomas we once again ran the successful #ThanksResearch campaign. The aim of this campaign was to get positive messages about biomedical research to a much wider community in the NW. Over the summer of 2021 these positive messages about research are estimated to have been seen by 272,000 people throughout Washington and Oregon.



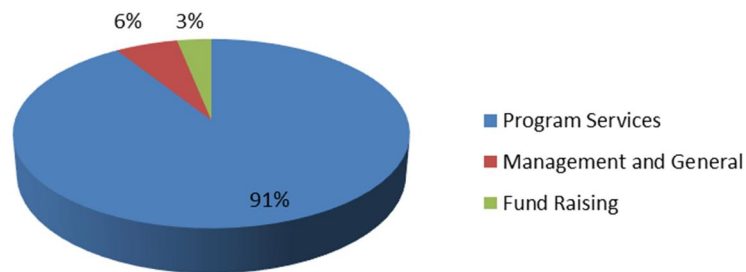
FINANCIAL RESULTS

Northwest Association for Biomedical Research		
Statements of Financial Position		
September 30, 2021 and 2020		
Assets	2021	2020
Current Assets	192,849	160,827
Property and Equipment	-	-
Total Assets	192,849	160,827
Liabilities and Net Assets	2021	2020
Current Liabilities	71,681	82,924
Net Assets	121,168	77,903
Total Liabilities and Net Assets	192,849	160,827

Support and Revenue 2021



Expenses 2021



2021 EXECUTIVE COMMITTEE

SALLY THOMPSON-IRITANI, DVM, PhD; President; Director Washington National Primate Research Center, University of Washington
CAMI GEARHART, JD; Immediate Past President; Former CEO, Quorum Review (Resigned at 2020 Annual Meeting)
AARON PUTZKE, PhD; Vice President; Professor, Whitworth University
GREGORY YANDL, MBA; Director Research Finance, Swedish
BOB ENNES, BA; Treasurer; Chair, Finance Committee; Director, Health Sciences Academic Services & Facilities, University of Washington
SHANNON REYNOLDS, BA, CPIA, RLAT; Regulatory Compliance Specialist, Allen Institute
RICHARD BURROWS, Senior Veterinary Sciences Technologist,
KIM STOCKING, DVM, DACLAM; Director Office of Animal Welfare, University of Washington

2021 BOARD OF DIRECTORS

DOUG BADGER, BA; Managing Partner, Quinn Thomas (representing PhRMA)(Resigned during the year)
MIKE BROADHURST; General Manager, Preclinical Seattle, Altasciences
BRUCE BUSBY; Director of Environmental Health and Safety at the Fred Hutchinson Cancer Research Center
JESSICA COHEN, MHS; Director, Office of Research Ethics, PATH
LINDA COLEMAN, JD; Director, Human Research Protection Program, Yale University
MACKENZIE COOPER; QSenior Business Development Manager, Medix Scientific (Appointed during the year)
RAMSEY COX, BSC; Quinn Thomas (representing PhRMA)(Appointed during the year)
JEROME DIFFERDING, MPH; ANW Regional Director of Clinical Research, Providence (Appointed during the year)
KARA DROLET, PhD; Associate Vice President, Research Integrity Office, Oregon Health & Science University
EMILY FIRMAN, MPH, MSW; Consultant, Arcora Foundation
LAURA FLORES CANTRELL, JD; Executive Director, Andy Hill CARE Fund.
DAVID FORSTER, JD, MA, CIP; Chief Compliance Officer, WIRB-Copernicus Group
ROB GAEBEL, MSC; IACUC Coordinator, Oregon State University
RAN GOLDMAN, MD; Pediatrician, Researcher and IRB Chair, University of British Columbia (Appointed during the year)
JENNIFER HANSBERRY, RN, BSN; Administrative Director of the Swedish Center for Research and Innovation
MARY HEALY, MPH; Executive Director, Research Operations, Providence (Appointed during the year)
DAVID HOLMGREN; IRB Manager, Research Integrity Office, Oregon Health & Science University
MIKE KLUZIK, MHS; Director, Office of Research Assurances at Washington State University
KARI KOSZDIN, D.V.M, DIPL ACLAM, CPIA; Veterinary Medical Officer, VA Puget Sound (Resigned at 2020 Annual Meeting)

ORGANIZATIONAL MEMBERS

Platinum Sustaining Members

Advarra
University of Washington
WCG IRB

Gold and Gold Sustaining Members

Fred Hutchinson Cancer Research Center
Oregon Health & Sciences University
Providence
Swedish
Washington State University

Silver and Silver Sustaining Members

Altasciences
Benaroya Research Institute

Bronze and Bronze Sustaining Members

Allen Institute
Arcora
Andy Hill Care Fund
EvergreenHealth
Kaiser Permanente
Medix Scientific
Multicare Health System
PATH
PhRMA
Portland State University
Seagen
Seattle Children's Research Institute
University of Oregon
VA Puget Sound
Whitworth University
Washington Global Health Alliance
WBBA

Vendor Members

LabDiet/Purina
Sage Bionetworks
The Jackson Laboratory
Tryl

NWABR Staff

KEN GORDON; Executive Director
MANSI KAUSHIK, MS; Camp Manager
WENDI RUSSAC, MS; Accounting and Education Programs
JENNIFER WROBLEWSKI, MPH; Public Engagement Manager

NWABR
Northwest Association for Biomedical Research

2633 Eastlake Ave E, Suite 302, Seattle, WA 98102
executivedirector@nwabr.org | www.nwabr.org

206-957-3337 |

2021 BOARD OF DIRECTORS (Continued)

KELLY LAWRENCE, JD; Manager and Regulatory Attorney, Seattle Children's Research Institute
STEPHEN LIBBY, PhD; Research Associate Professor and IBC Chair, University of Washington
MONTE MATTHEWS, BA, CPIA; Director of Animal Welfare at the University of Oregon.
TANYA MATTHEWS; Administrator, IRB & Research Review at Kaiser Permanente (Washington Health Research Institute)
ALISHA MCCALL; Research Administrator, VA Puget Sound
HEATHER PETERS; IRB Coordinator for the MultiCare Health System
TENA PETERSEN; IACUC Administrator, IBC Administrator, Senior Administrative Coordinator, Bloodworks
NORMAN PETERSON, DVM, PhD, DACLAM; Director In Vivo Sciences & Technology, Seagen
JAMES RIDDLE, MCSE, CNE, CIP, CRQM; Vice President Institutional Services for Advarra
GORDON ROBLE, DVM, DACLAM; Director Comparative Medicine, Fred Hutch
TINA ROGERS; MBA, PhD; Vice President Preclinical Services, Altasciences
JOHN ROLL, PhD; Professor, Vice Dean for Research for the Elson S. Floyd College of Medicine, Associate Vice President for Health Sciences Research, Washington State University
MEGHAN SCOTT, BA; Director, Institutional Review Office Fred Hutchinson Cancer Research Center
DEBBIE SHIOZAKI, BA, MPH; Senior Director, Scientific Support Services
CHARLOTTE SHUPERT, PhD, CIP; IRB Specialists
RAJESH UTHAMANTHIL, DVM, PhD, DACLAM; Chief Medical Officer (Preclinical & Translational), Director of Comparative Medicine, Seattle Children's Research Institute
PRESTON VAN HOOSER; Review Scientist & Compliance Manager, Office of Animal Welfare, University of Washington
CHERYL WEAVER, BA, CCRC, CCRA; Immediate Past President; Administrative Director, Clinical Research Program, Benaroya Research Institute at Virginia Mason

Donors and Supporters

As an organization NWABR is incredibly fortunate to be supported by members, donors, event attendees, and sponsors. Sometimes certain individuals or organizations fall into several of these categories. The following is a combined list of all of NWABR's supporters over the last year. We have grouped multiple contributions – so the

donor's true support for NWABR can be seen.

The Fundamental Building Blocks - The ACGT level – contributions up to \$1,000

Lizbeth Adams
Mary Alberg
Kathy Andrich
Karalee Baquero
Melissa Barker-Haliski

Susan Bell
Michael Blume
John and Catherine Brandon
Christopher W. Braunger
Max Brown
Andrew Burich
Richard Burrows (Board)
Bruce Busby (Board)
John Cannon
Judy Cashman

NWABR
Northwest Association for Biomedical Research

2633 Eastlake Ave E, Suite 302, Seattle, WA 98102
executivedirector@nwabr.org | www.nwabr.org

206-957-3337

Cindy Chang
Robert Cheng
Paula Clifford
Jessica Cohen (Board)
Richard and Dodie Cole
Jen & Peter Cole
Linda Coleman (Board)
Mackenzie Cooper (Board)
Alysun Deckert
Jerome Differding (Board)
Marion Dorer
Kara Drolet (Board)
Amanda Egge
Bob Ennes (Board)
Jean Feagin
Laura Flores Cantrell (Board)
David Forster (Board)
Rob Gaebel (Board)
Luke Gelinias
Ran Goldman (Board)
Diana Gordon
Carla Greenbaum
J. Patrick Guider Jr.
Tyler Gunter
Vance Hall
George Haluska
Sara Harnish
Mary Healy (Board)
Nicholas Hebb
David Holmgren (Board)
Margaret Hudson
Christina Ironside
Vickie Jarrell
The Jackson Laboratory
Erica Jonlin
Edward J. Kelly
Scott Kelly
Bruce Kennedy
Tom Kensler
Jennifer Kogut
Katherine Kronmal
LabDiet
Yvonne Lau
Carolyn Malinowski
Lindsey Mann
Tanya Matthews (Board)
Alisha McCall (Board)
Travis Milnes
Kelly Morrisroe

Donielle O'Connor
Cindy Pekow
Heather Peters (Board)
Norman Peterson (Board)
Tara Polek
Aaron Putzke (Board)
Shannon Reynolds (Board)
James Riddle (Board)
Gordon Roble (Board)
Tina Rogers (Board)
Kara Ronellenfitch
Sage Bionetworks
Audrey-Jo Santo
Ashley Scherman
Meghan Scott (Board)
Shannon Shelah Roth
Debbie Shiozaki (Board)
Charlotte Shupert (Board)
Greg and Vandana Slatter
Julie Slayton
Sydnie Sliker
Caroline Socha
Laurel and David Stitzhal
Jane Sullivan
Christine Suver
Andrea Swanson
Amanda Tanadinata
Tryl
Megan Tully
Raj Uthamanthil (Board)
J. Preston Van Hooser (Board)
Elizabeth Vogt
Reitha Weeks
Chris Weir
Ana Wells
Erik Westman
Jen Wroblewski (Staff)
Melinda Young

**The Variability of Life –The
Gene Level – contributors from
\$1,000 and up to \$5,000**

Allen Institute
Andy Hill CARE Fund
Arcora
Benaroya Research Institute
EvergreenHealth
Kaiser Permanente
MultiCare Health Systems

PATH
Portland State University
Seagen
Seattle Children's Research
Institute
University of Oregon
VA Puget Sound
Bob and Cindy Wroblewski
Cami Gearhart
Cheryl Weaver (Board)
Cindy Pekow
Dena Levine
Gregory Yandl (Board)
Hope Weckin
Jennifer Hansberry (Board)
John Roll (Board)
Katharyn Gerlich
Kim Stocking (Board)
Larry Corey
Lynn and Tim Rose
Max Witter
Sally Thompson-Iritani (Board)

**The Pattern of Life – The
Chromosome Level –
contributors from \$5,000 and
up to \$15,000**

Altasciences
Ken Gordon (Staff)
Oregon Health and Science
University
Providence
Swedish
Steve and Tricia Trainer
Washington Global Health
Alliance
Washington State University

**The Full Expression of Life –
The Genome Level –
contributors from \$15,000 and
up**

Advarra
PhRMA
University of Washington
WCG IRB

NWABR
Northwest Association for Biomedical Research

2633 Eastlake Ave E, Suite 302, Seattle, WA 98102
executivedirector@nwabr.org | www.nwabr.org

206-957-3337